

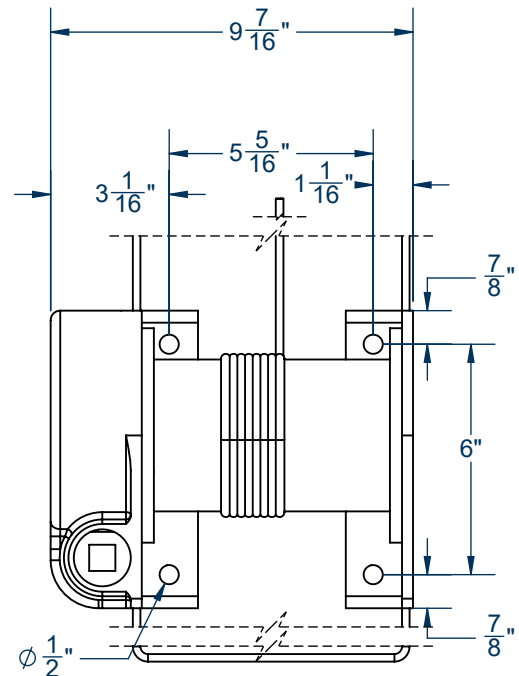
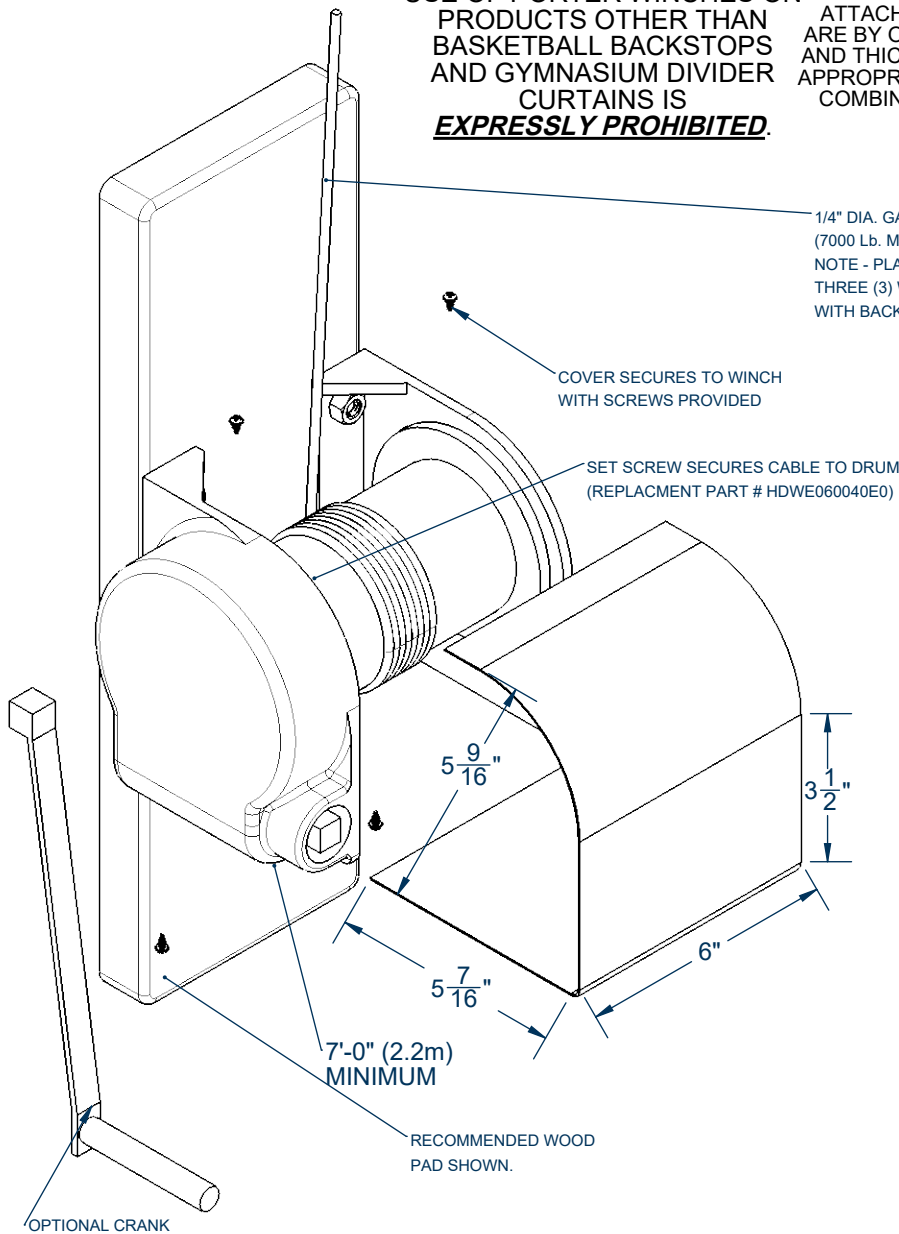
# 00700100 - MANUAL WINCH - MANUAL WINCH

**WARNING**  
USE OF PORTER WINCHES ON  
PRODUCTS OTHER THAN  
BASKETBALL BACKSTOPS  
AND GYMNASIUM DIVIDER  
CURTAINS IS  
**EXPRESSLY PROHIBITED.**

NOTE - ALL HARDWARE FOR  
ATTACHING WOOD PAD TO WALL  
ARE BY OTHERS. VERIFY MATERIAL  
AND THICKNESS OF WALL, AND USE  
APPROPRIATE HARDWARE / ANCHOR  
COMBINATION (MINIMUM 1/2" DIA.  
HARDWARE).

PARTS LIST: NO. 00700100		
NO.	QTY.	DESCRIPTION
1	1	WINCH ASSEMBLY
2	1	WINCH COVER
3	3	1/2" x 2" LG. CARRIAGE BOLT WITH LOCKSCREW AND HEX KIT
4	4	SCREW

FITG700 WALL KIT	
00700100	MANUAL WINCH
XCRK700100	HAND CRANK
XPUL57401000	SWIVEL PULLEY
XPUL50500002	WALL PULLEY BRACKET



HOLE MOUNTING PATTERN FOR WINCH

- \_\_\_\_\_ - 00700100 - MANUAL WINCH
- \_\_\_\_\_ - XCRK70000002; HAND CRANK
- \_\_\_\_\_ - XPUL57401000; SWIVEL PULLEY
- \_\_\_\_\_ - XPUL50500002; WALL PULLEY
- \_\_\_\_\_ - ROPE00039060; 1/4" AIRCRAFT CABLE (FT)
- \_\_\_\_\_ - ROPE00037000; CABLE CLAMP 1/4"
- \_\_\_\_\_ - 00268000; PORTABLE WINCH OPERATOR (B-269)

PACKAGE FITG700 WALL  
(CAN BE ORDERED INDIVIDUALLY)

# 00700100 - MANUAL WINCH - MANUAL WINCH

## SPECIFICATIONS

### PORTER No. 00700100 MANUAL WINCH

Winch shall be worm gear type designed to hold backstop at any position when raising or lowering. The winch shall be supported by a heavy, formed steel main frame for ease of mounting. Worm gear shall be a special forged bronze alloy providing a 30-to-1 ratio. Thrust of the worm shall be absorbed by a hardened steel ball bearing mounted in cast high tensile aluminum support housing. Input worm shall be machined from high carbon steel with hardened contact surfaces. Input shaft shall not extend beyond winch cover to reduce the possibility of injury from an extended type shaft. Input shaft shall be 3/4" square for use with special socket type handle provided with each pair of backstops or No. 268000 portable electric winch operator (optional - please specify.)

Cast iron cable storage drum shall be provided with a machined hole and set screw arrangement for securing cable to drum. All input shaft and drum support bearings shall be self-lubricating. Winch housing shall be finished in a medium gray enamel.

Winch shall be provided for wall mounting with a 2" x 8" x 2' long yellow pine wood pad for mounting to gymnasium walls when required. Pad shall have chamfered edges.

### OPTIONAL ITEMS TO SPECIFY

- No. 268000: Portable Electric Winch Operator (see B-268)