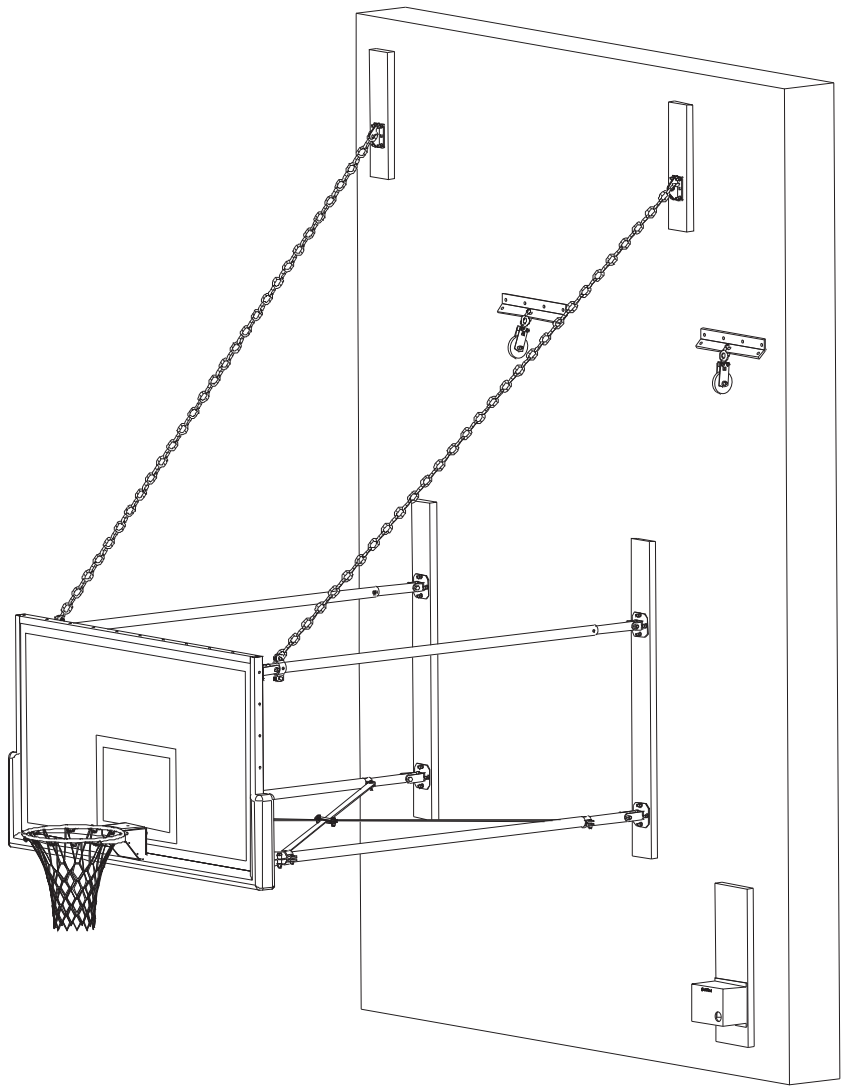


BASKETBALL BACKSTOPS

- \$' %&\$\$\$\$ SERIES 657? GHCDG



Porter®

.....GdYVZ[VWh]cb 'G\ YYhg'

SAVE THESE INSTRUCTIONS FOR FUTURE USE



TABLE OF CONTENTS

<u>Page No.</u>	<u>Item No. / Description</u>
SPECIFICATION SHEETS	
---	- (3'-6" to 10')
32-33	- Standard
—	- Rectangular Back Board
34-35	- Without Electric Height Adjuster
36-37	- With Electric Height Adjuster
—	- Fan Back Board
38-39	- Without Electric Height Adjuster
40-41	- With Electric Height Adjuster
—	- (10' to 12')
42-43	- Standard
—	- Rectangular Back Board
44-45	- Without Electric Height Adjuster
46-47	- With Electric Height Adjuster
—	- Fan Back Board
48-49	- Without Electric Height Adjuster
50-51	- With Electric Height Adjuster
OTHER RESOURCES	
52	- Loading Details
53-54	- Anchoring Details
55-56	- Manual Height Adjuster Operation

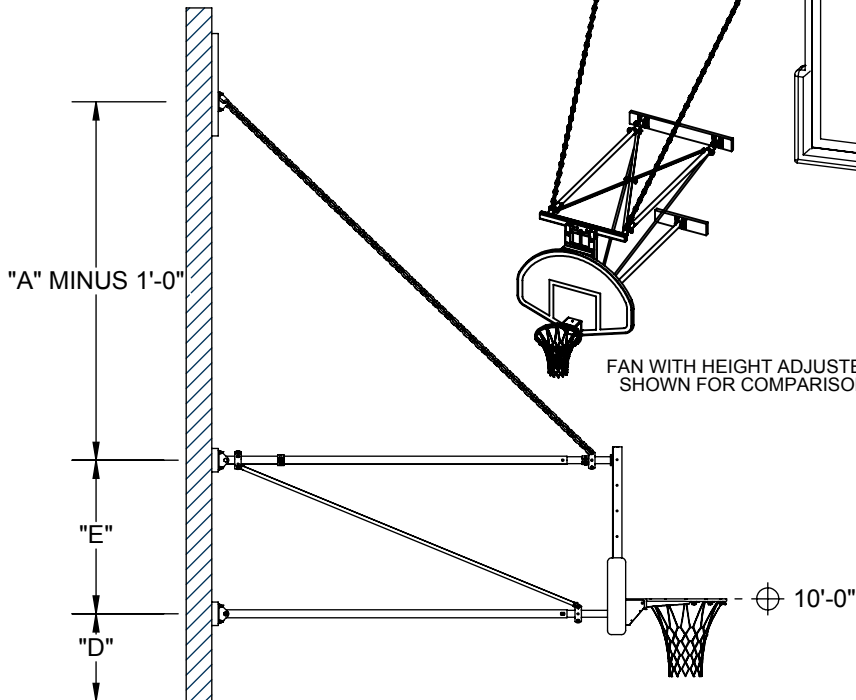
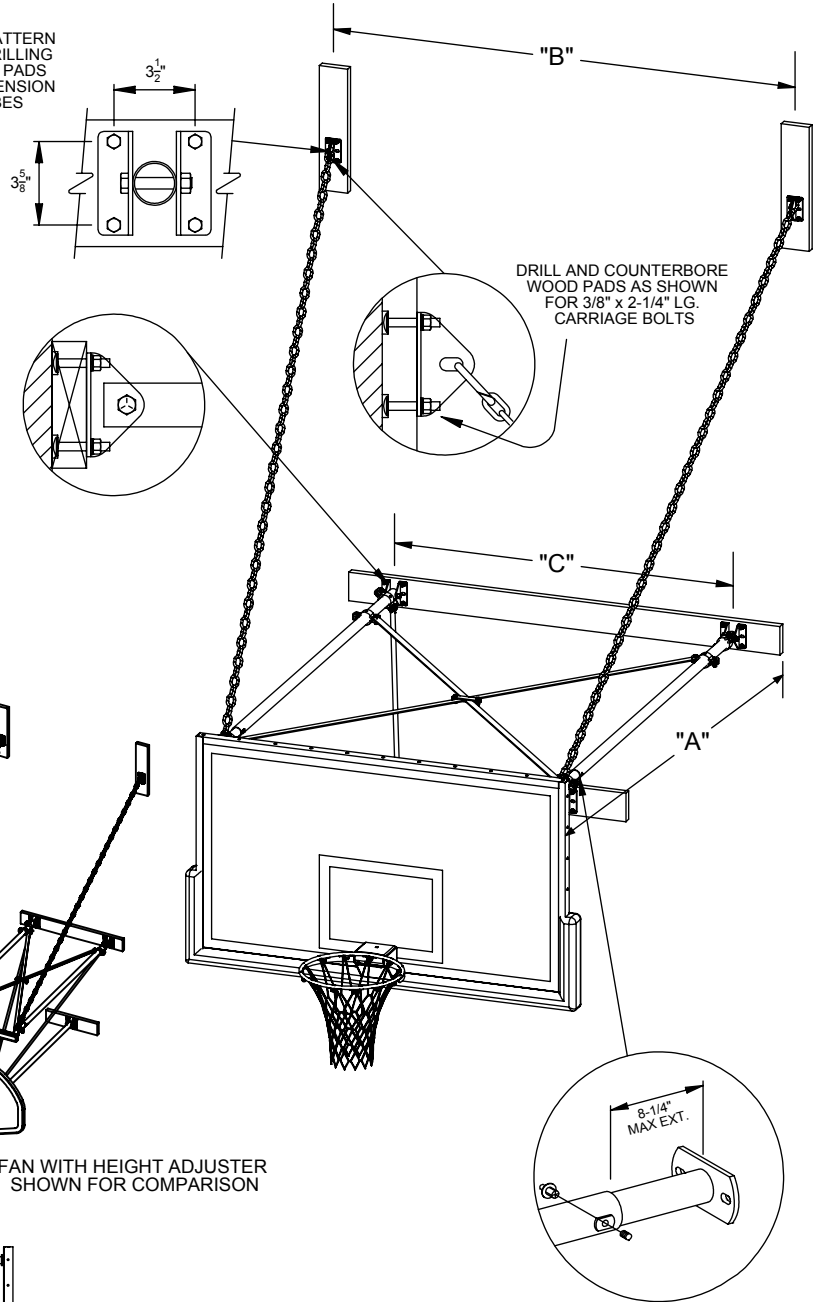
90312000 - STATIONARY BACKSTOP

WALL MOUNTED, CENTER-STRUT UNIT
3'-6" TO 10' FACE OF BACKBOARD TO WALL

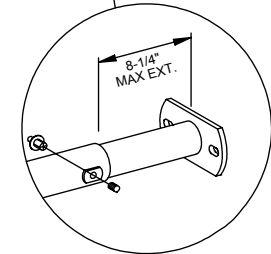
"A" FACE OF BACKBOARD TO WALL	"B" CHAIN HANGER DISTANCE (RECTANGULAR NO HEIGHT ADJUSTER)	"B" CHAIN HANGER DISTANCE (FAN OR ANY HEIGHT ADJUSTER)
3' 6-1/8" to 4'-0"	5'-6" (1.68m)	3'-6" (1.07m)
4' 0-1/8" to 5'-0"	6'-0" (1.83m)	4'-0" (1.22m)
5' 0-1/8" to 6'-0"	6'-6" (1.98m)	4'-6" (1.37m)
6' 0-1/8" to 7'-0"	7'-0" (2.14m)	5'-0" (1.53m)
7' 0-1/8" to 8'-0"	7'-6" (2.28m)	5'-6" (1.67m)
8' 0-1/8" to 9'-0"	8'-0" (2.77m)	6'-0" (1.83m)
9' 0-1/8" to 10'-0"	8'-6" (2.59m)	6'-6" (1.98m)

BACKBOARD STYLE (SEE B-200)	"C" PIPE SUPPORT DISTANCE	"D" HINGE TO FLOOR	"E" VERTICAL PIPE SUPPORT DISTANCE
RECTANGULAR	5'-6" (1.68m)	9'-9" (2.97m)	3'-0" (0.92m)
FAN	2'-11" (0.889m)	9'-8 $\frac{1}{2}$ " (2.96m)	2'-1 $\frac{1}{2}$ " (0.76m)
RECTANGULAR WITH HEIGHT ADJUSTER	2'-11" (0.889m)	9'-8 $\frac{1}{2}$ " (2.96m)	3'-8 $\frac{1}{2}$ " (1.12m)
FAN WITH HEIGHT ADJUSTER	2'-11" (0.889m)	9'-8" (2.94m)	3'-8 $\frac{1}{2}$ " (1.12m)

HOLE PATTERN
FOR DRILLING
WOOD PADS
AT EXTENSION
TUBES



FAN WITH HEIGHT ADJUSTER
SHOWN FOR COMPARISON



TELESCOPING EXTENSION TUBE
FEATURE ALLOWS FOR PRECISE
PLUMBING OF BACKBOARD. AFTER
FINAL ADJUSTMENTS, DRILL 3/8"
Ø HOLE THRU INNER TUBE AND
SECURE WITH HAMMER HIT RIVET.

- 90312000 WALL MOUNTED, CENTER-STRUT UNIT
- FACE OF BACKBOARD TO WALL ("A")
- BACKBOARD SELECTION
- GOAL SELECTION
- PADDING SELECTION

90312000 - STATIONARY BACKSTOP

WALL MOUNTED, CENTER-STRUT UNIT
3'-6" TO 10' FACE OF BACKBOARD TO WALL

SPECIFICATIONS

Backstop shall be wall-braced type with face of backboard extended 3' 6-1/8" to 10'-0" from supporting wall

Extension frames shall be fabricated of three (3) 1-7/8" O.D. tubes with a telescoping end section for ease of installation, and precise plumbing and alignment of backboard with official court markings, even when supported on uneven wall conditions. Front ends of extension frame assemblies shall terminate in heavy steel flanges for attachment to backside of backboard. Back ends of extension frame assemblies shall be drilled and bolted to precision die-formed hinge angles for attachment to wall pads. Goal shall mount directly through the backboard and into a heavy steel flange Center-Strut® at the lower extension frame to eliminate any strain on the backboard, should a player hang on the front mounted goal.

Backstop shall be braced internally with 7/8" O.D. steel tension braces attached at both ends with precision die-formed clamps for rigidity and support of the Center-Strut® goal mount plate. Additional internal bracing shall consist of 3/16" x 1-1/4" steel tension flats attached at both ends with precision die-formed clamps and joined at their intersection with bolted steel fittings. Two (2) chain supports (3/16" proof coil chain) shall extend diagonally from the wall to the upper extension tubes, terminating in clamp-type fittings.

Southern yellow pine wall pads shall be provided at all wall attachment points. All edges shall be chamfered and pads shall be finished with two finish coats of natural gloss lacquer. Wood pads help distribute loads to walls. Some walls may not require wood pads.

All metal parts shall be powder coated. See swatch card SMPL00048024 for standard color options. (contact Porter for custom color requests)

Backstop provided with specified backboard and goal (see B-200 for options).

WARRANTY

- Wall mounted backstop structure comes with a 10 year limited warranty.
- Other components may be covered by their own warranty (see corresponding specifications for more details).

OPTIONAL ITEMS (SEE SPECIFICATION SHEETS FOR DETAIL)

- Height Adjuster (8' to 10' adjustable goal height) (see chart below)

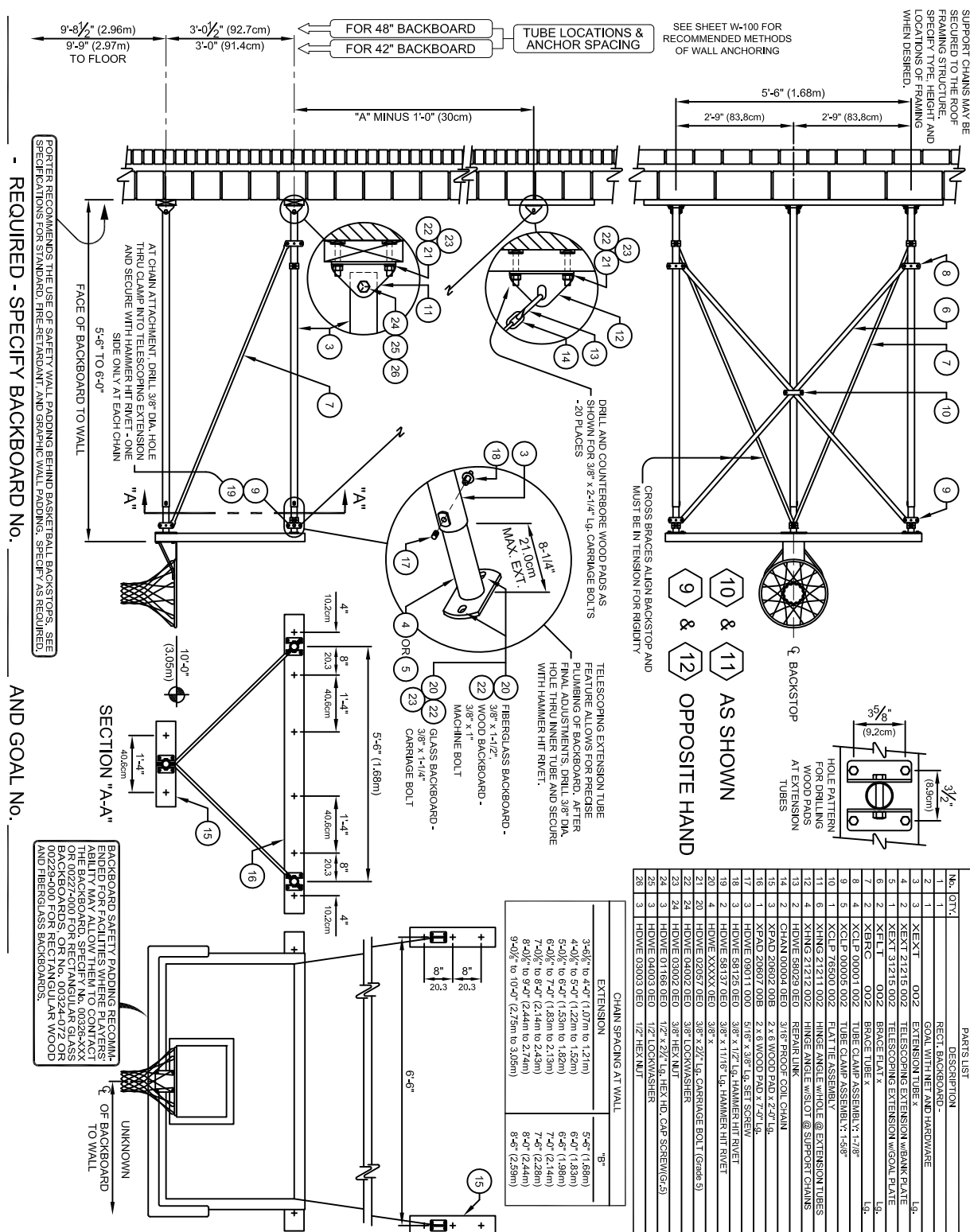
CENTER-STRUT® HEIGHT ADJUSTER

- | | |
|---|---|
| • For Manual Operation, See Page No.: | B-900-506 (Rectangular Boards) B-900-211 (Fan Boards) |
| • For Key Switch Operation, See Page No.: | B-901-506 (Rectangular Boards) B-901-211 (Fan Boards) |
| • For Powr-Stick Operation, See Page No.: | B-902-506 (Rectangular Boards) B-902-211 (Fan Boards) |
| • For Sportsonic® II Operation, See Page No.: | B-903-506 (Rectangular Boards) B-903-211 (Fan Boards) |
| • For Powr-Touch Operation, See Page No. | B-904-506 (Rectangular Boards) B-904-211 (Fan Boards) |

LEED® SUBMITTAL INFORMATION

Credit	Measure
MRc4-Recycled Content	Post Consumer Average 15.0% Post Industrial 0%
MRc5-Regional Materials	Raw materials originate from multiple sources so origin point cannot be determined. Final Manufacturing/Assembly in Champaign, IL 61822

CENTER-STRUT® WALL MOUNTED BACKSTOP FOR RECTANGULAR BACKBOARD 4' 0-1/8" to 10'-0" EXTENSION



Id.	Qty.	Part Description	Part Used On
1		RECI. DISCARD	
2		GOAL WITH NET AND HARDWARE	
3	3	XEXT 002	EXTENSION TUBE x 1.0
4	3	XEXT 31215 002	TELESCOPING EXTENSION W/BLANK PLATE
5	1	XEXT 31215 002	TELESCOPING EXTENSION W/GAL. PLATE
6	2	XFLT 002	BRACE PLATE x 1.0
7	2	XBRG 002	BRACE TUBE x 1.0
8	4	XCLP 00001 002	TUBE CLAMP ASSEMBLY, 1/8"
9	5	XCLP 00005 002	TUBE CLAMP ASSEMBLY, 1/8"
10	1	XCLP 76500 002	FLAT IR THE ASSEMBLY
11	6	XING 71211 002	HINGE ANGLE W/WHOLE @ EXTENSION TUBES
12	4	XING 71212 002	HINGE ANGLE W/IDST @ SUPPORT CHAINS
13	2	HW 56029 002	REPAIR LINK
14	2	HW 56030 002	REPAIR LINK
15	2	XRAD 00002 002	2 X WOOD PAD, 2.0"x1.0"
16	1	XRAD 20802 002	2 X WOOD PAD, 2.0"x1.0"
17	3	HW 09011 000	5/16" x 3/8" Lx. SET SCREW
18	3	HW 58125 000	3/8" x 1/2" Lx. HAMMER HIT RIVET
19	2	HW 58137 000	3/8" x 1/16" Lx. HAMMER HIT RIVET
20	4	HW XXXXX 060	3/8" x
21	20	HW 02057 060	3/8" x 2 1/2" Lx. CARRIAGE BOLT (Grade 5)
22	24	HW 04002 060	3/8" LOCKWASHER
23	24	HW 03002 060	3/8" HEX NUT
24		HW 01166 060	1/2" x 2 1/2" Lx. HEX H. CAP SCREW(G.5)
25	3	HW 04003 060	1/2" LOCKWASHER
26	3	HW 03003 060	1/2" HEX NUT

00312-000 - WALL-MOUNTED BACKSTOP

CENTER-STRUT® WALL MOUNTED BACKSTOP FOR
RECTANGULAR BACKBOARD 4' 0-1/8" to 10'-0" EXTENSION

SPECIFICATIONS

PORTER No. 00312-_____ CENTER-STRUT®
WALL BRACED BACKSTOP FOR RECTANGULAR BACKBOARD

Backstop shall be wall-braced type with face of backboard extended 3' 6-1/8" to 10'-0" from supporting wall (specify).

Extension frames shall be fabricated of three (3) 1-7/8" O.D. tubes with a telescoping end section for ease of installation, and precise plumbing and alignment of backboard with official court markings, even when supported on uneven wall conditions. Front ends of extension frame assemblies shall terminate in heavy steel flanges for attachment to backside of backboard. Back ends of extension frame assemblies shall be drilled and bolted to precision die-formed hinge angles for attachment to wall pads. Goal shall mount directly through the backboard and into a heavy steel flange Center-Strut® at the lower extension frame to eliminate any strain on the backboard, should a player hang on the front mounted goal.

Backstop shall be braced internally with 7/8" O.D. steel tension braces attached at both ends with precision die-formed clamps for rigidity and support of the Center-Strut® goal mount plate. Additional internal bracing shall consist of 3/16" x 1-1/4" steel tension flats attached at both ends with precision die-formed clamps and joined at their intersection with bolted steel fittings. Two (2) chain supports (3/16" proof coil chain) shall extend diagonally from the wall to the upper extension tubes, terminating in clamp-type fittings.

Southern yellow pine wall pads shall be provided at all wall attachment points. All edges shall be chamfered and pads shall be finished with two finish coats of natural gloss lacquer.

All metal parts shall be painted one (1) coat of flat black enamel. (If special painting of colors is required, specify final painting by painting contractor.)

Specify backboard and goal as required.

00312-000 - WALL-MOUNTED BACKSTOP

WALL-MOUNTED BACKSTOP WITH CENTER-STRUT® HEIGHT ADJUSTER
- RECT. BACKBOARD - 3'-6 $\frac{1}{8}$ " to 10'-0" EXTENSION

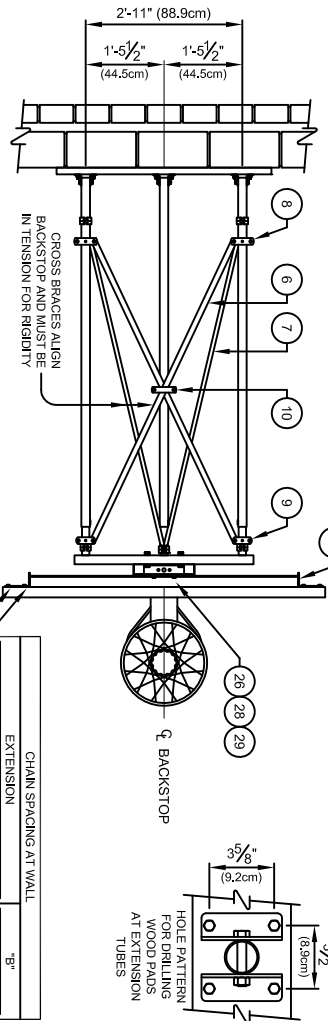
Porter

WWW.PORTERATHLETIC.COM/FACILITY

WALL MOUNT SPECIFICATION SHEET

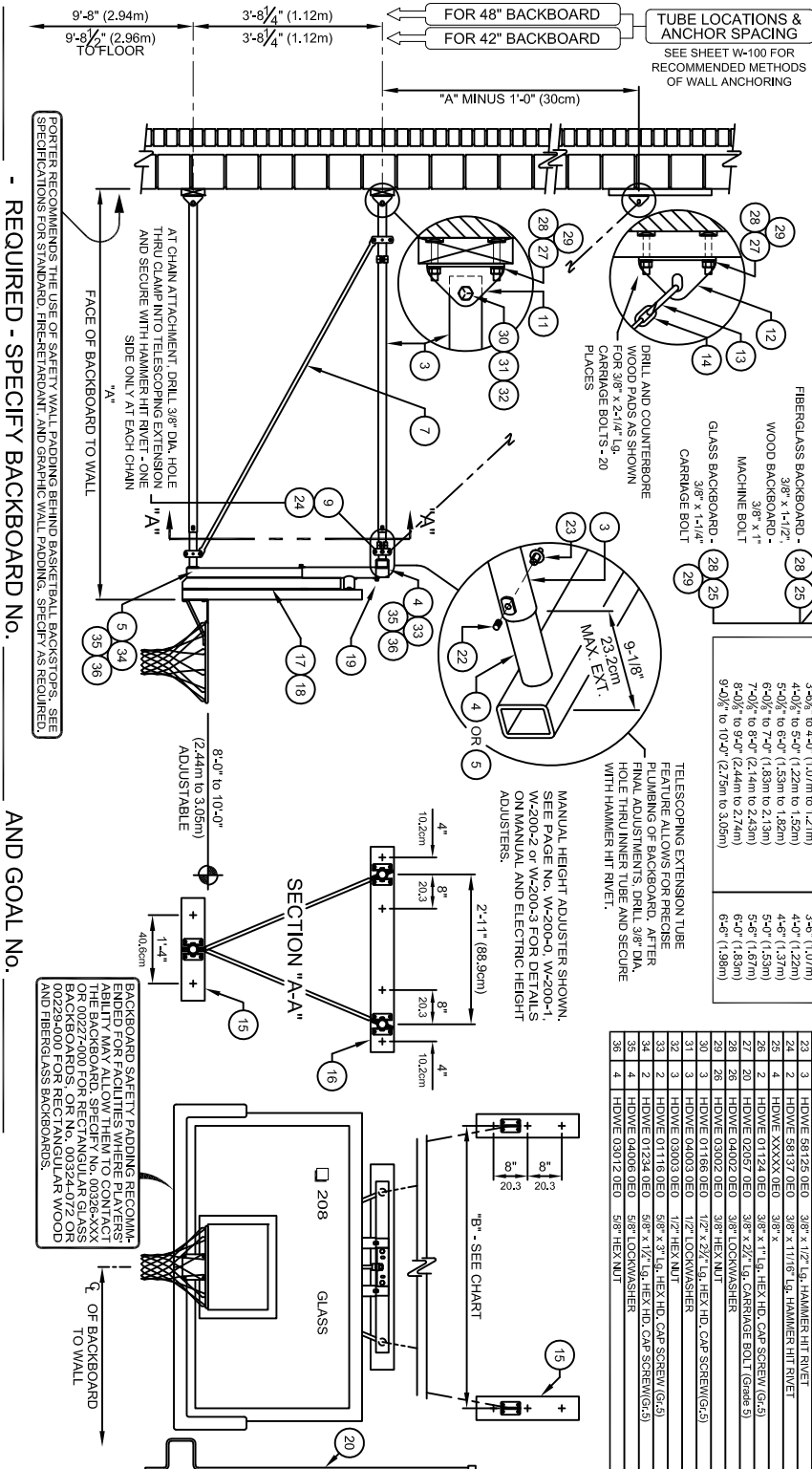
W-312-R10H

SUPPORT CHAINS MAY BE SECURED TO THE ROOF FRAMING STRUCTURE. SPECIFY TYPE, HEIGHT AND LOCATIONS OF FRAMING WHEN DESIRED.



EXTENSION	"B"
3'-6 $\frac{1}{8}$ " to 4'-0" (1.07m to 1.21m)	3'-6" (1.07m)
4'-0" to 5'-0" (1.22m to 1.52m)	4'-0" (1.22m)
5'-0" to 6'-0" (1.52m to 1.83m)	4'-6" (1.37m)
6'-0" to 7'-0" (1.83m to 2.13m)	5'-0" (1.52m)
7'-0" to 8'-0" (2.13m to 2.43m)	5'-6" (1.68m)
8'-0" to 9'-0" (2.44m to 2.74m)	6'-0" (1.83m)
9'-0" to 10'-0" (2.74m to 3.05m)	6'-6" (1.98m)

No.	QTY.	DESCRIPTION
1	1	RECT. BACKBOARD -
2	3	GOAL WITH NET AND HARDWARE
3	3	EXT. EXTENSION TUBE x 1/4"
4	1	EXT. 31216 002 UPPER SPAN TUBE W/ DOWN T
5	1	EXT. 31217 002 LOWER TELESCOPING EXTENSION
6	2	XBRLT 002 BRACE PLATE x 1/4"
7	2	XBRLT 002 BRACE PLATE x 1/4"
8	4	XCLP 00001 002 TUBE CLAMP ASSEMBLY 1-1/8"
9	4	XCLP 00002 002 TUBE CLAMP ASSEMBLY 1-1/8"
10	6	XKNG 21211 002 HINGE ASSEMBLY @ EXTENSION TUBES
11	6	XKNG 21212 002 HINGE ANGLE W/ SLOT @ SUPPORT CHAINS
12	2	HDVE 68023 002 REPAIR LINK
13	2	CHAM 00004 002 3/16" PROOF COIL CHAIN
14	2	XPAD 20804 008 2 x 6 WOOD PAD x 4'-0" Lg.
15	3	FRAME 00162 002 HEIGHT ADJUSTER ASSY - Manual Operation
16	1	LABEL 00235 000 HEIGHT SETTINGS LABEL
17	1	XCGR 90000 102 HT. ADJUSTER CRANK (1 per 2 units)
18	4	HDVE 01134 000 3/8" x 1/2" Lg. NYLON BOLT
19	4	XCGR 90000 102 HT. ADJUSTER CRANK (1 per 2 units)
20	1	EXT. 91612 002 BACKBOARD EXTENSION
21	3	HDVE 08011 000 5/16" x 3/8" Lg. SET SCREW
22	3	HDVE 58125 002 3/8" x 1/2" Lg. HAMMER HIT RIVET
23	2	HDVE XXXXX 002 3/8" x 1/2" Lg. HAMMER HIT RIVET
24	2	HDVE 01124 002 3/8" x 1/2" Lg. HAMMER HIT RIVET
25	2	HDVE 02061 002 3/8" x 22 Lg. CARRIAGE BOLT (GRADE 5)
26	2	HDVE 03052 002 3/8" HEX NUT
27	2	HDVE 01168 002 1/2" x 22 Lg. HEX HD. CAP SCREW (G-5)
28	3	HDVE 04003 002 1/2" LOCKWASHER
29	3	HDVE 03003 002 1/2" HEX NUT
30	3	HDVE 01116 002 5/8" x 3/4" Lg. HEX HD. CAP SCREW (G-5)
31	2	HDVE 01124 002 5/8" x 1/2" Lg. HEX HD. CAP SCREW (G-5)
32	4	HDVE 04000 002 5/8" LOCKWASHER
33	4	HDVE 03012 002 5/8" HEX NUT



Porter

888-277-7778 PORTER@PORTERATHLETIC.COM
© COPYRIGHT 2015 PORTER ATHLETIC - ALL RIGHTS RESERVED

PROJECT NUMBER

PROJECT NAME

10/1/2015

00312-000 - WALL-MOUNTED BACKSTOP

WALL-MOUNTED BACKSTOP WITH CENTER-STRUT® HEIGHT ADJUSTER
- RECT. BACKBOARD - 3'-6 $\frac{1}{8}$ " to 10'-0" EXTENSION

SPECIFICATIONS

PORTER No. 00312-___ WALL BRACED BACKSTOP WITH CENTER-STRUT® HEIGHT ADJUSTMENT UNIT FOR RECTANGULAR BACKBOARD

Backstop shall be wall-braced type with face of backboard extended 3' 6-1/8" to 10'-0" from supporting wall (specify).

Extension frames shall be fabricated of three (3) 1-7/8" O.D. tubes with a telescoping end section for ease of installation, and precise plumbing and alignment of backboard with official court markings, even when supported on uneven wall conditions. Upper extensions shall terminate in a heavy wall rectangular tube assembly on standard 2'-11" centers. Extension frame assemblies shall be drilled and bolted to precision die-formed hinge angles for attachment to wall pads. Backstop shall be braced internally with 7/8" O.D. steel tension braces attached at both ends with precision die-formed clamps for rigidity and support of the Center-Strut® goal mount plate. Additional internal bracing shall consist of 3/16" x 1-1/4" steel tension flats attached at both ends with precision die-formed clamps and joined at their intersection with bolted steel fittings. Two (2) chain supports (3/16" proof coil chain) shall extend diagonally from the wall to the upper extension tubes, terminating in clamp-type fittings.

Southern yellow pine wall pads shall be provided at all wall attachment points. All edges shall be chamfered and pads shall be finished with two finish coats of natural gloss lacquer.

Height adjustment unit shall be designed to provide an adjustable, direct mount Center-Strut® goal attachment system to eliminate any strain on the backboard, should a player hang on the front mounted goal. Height adjustment units without the prescribed direct mount goal feature will not be approved as equal. Height adjustment feature will allow goal height settings from 8'-0" to the official 10'-0" for use by all age groups. Unit shall be designed for use with any official size (4' x 6' or 3'-6" x 6') Porter rectangular backboard and companion front-mount type goal.

Center unitized support frame of height adjustment unit shall be fabricated by dual, 2-3/16" square heavy wall zinc plated guide tubes located on 11-3/16" centers. Ends of guide tubes shall be welded to heavy mounting brackets. Outer dual slide tubes shall support heavy structural steel angle sections which extend downward to accept a direct mount Center-Strut® goal mounting system. Slide tube assembly shall be provided with a heavy formed steel section to attach a horizontal backboard support assembly to secure the unit to the upper two corners of the rectangular backboard on standard (5'-6") mounting centers.

Height adjustment unit shall incorporate a centrally located 3/4" diameter Acme threaded rod equipped with precision, hardened steel roller thrust bearings for ease of operation from the playing floor by means of an awning crank-type mechanism. Height adjustment system shall incorporate an internal, spring-loaded height locking mechanism to automatically lock and hold unit at any desired goal height during play. Lock mechanism automatically releases when height setting changes are made with adjustment crank assembly. Adjustment crank assembly shall be provided with each pair of height adjustment units. A height setting scale shall be located on the side of the unit to visually determine height settings from 8'-0" to 10'-0" in 3" increments.

Limited lifetime warranty on all Porter rectangular backboards when used in conjunction with Porter Center-Strut® height adjustment unit installed on a Porter No. 312 Wall-Braced Backstop.

All metal parts shall be painted one (1) coat of flat black enamel. (If special painting of colors is required, specify final painting by painting contractor.)

Specify backboard and goal as required.

porter
www.porterathletic.com/facility

W-312-F10

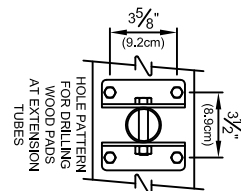
2'-11" (88.9cm)

1'-5½" (44.5cm) 1'-5½" (44.5cm)

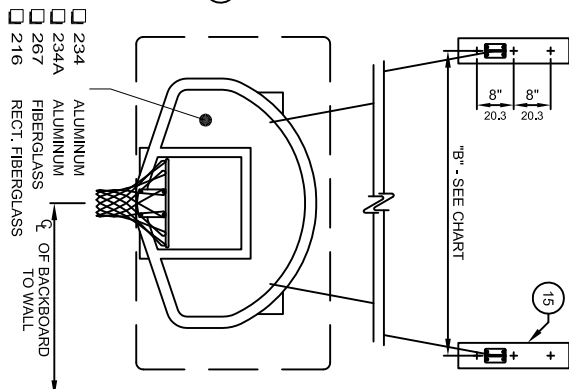
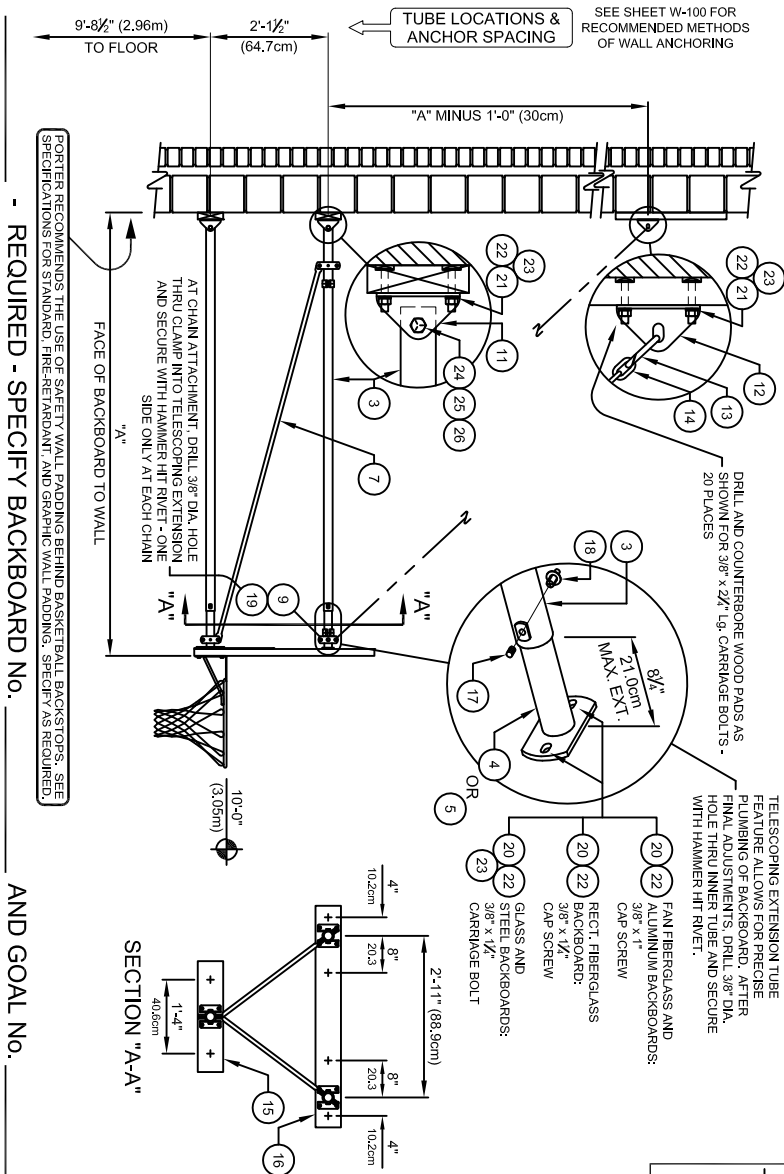
CROSS BRACES ALIGN BACKSTOP AND MUST BE IN TENSION FOR RIGIDITY

8, 6, 7, 10, 9

C BACKSTOP



CHAIN SPACING AT WALL	
EXTENSION	"g"
3-6/0 to 4-0" (1.07m to 1.21m)	3-6" (1.07m)
4-0/0 to 5-0" (1.22m to 1.52m)	4-0" (1.22m)
5-0/0 to 6-0" (1.53m to 1.83m)	4-6" (1.37m)
6-0/0 to 7-0" (1.83m to 2.13m)	5-0" (1.53m)
7-0/0 to 8-0" (2.14m to 2.43m)	5-6" (1.67m)
8-0/0 to 9-0" (2.44m to 2.74m)	6-0" (1.83m)
9-0/0 to 10-0" (2.75m to 3.05m)	6-6" (1.98m)



AND GOAL No.

00312-000 - WALL-MOUNTED BACKSTOP

CENTER-STRUT® WALL-MOUNTED BACKSTOP
FOR FAN BACKBOARD - 3'-6 $\frac{1}{8}$ " to 10'-0" EXTENSION

SPECIFICATIONS

PORTER No. 00222-000 PRO-PAD BACKBOARD PADDING KIT FOR OFFICIAL RECTANGULAR BACKBOARDS (EACH)

Backstop shall be wall-braced type with face of backboard extended 3' 6-1/8" to 10'-0" from supporting wall (specify).

Extension frames shall be fabricated of three (3) 1-7/8" O.D. tubes with a telescoping end section for ease of installation, and precise plumbing and alignment of backboard with official court markings, even when supported on uneven wall conditions. Front ends of extension frame assemblies shall terminate in heavy steel flanges for attachment to backside of backboard. Extension frame assemblies shall be drilled and bolted to precision die-formed hinge angles for attachment to wall pads. Goal shall mount directly through the backboard and into a heavy steel flange Center-Strut® at the lower extension frame to eliminate any strain on the backboard, should a player hang on the front mounted goal.

Backstop shall be braced internally with 7/8" O.D. steel tension braces attached at both ends with precision die-formed clamps for rigidity and support of the Center-Strut® goal mount plate. Additional internal bracing shall consist of 3/16" x 1-1/4" steel tension flats attached at both ends with precision die-formed clamps and joined at their intersection with bolted steel fittings. Two (2) chain supports (3/16" proof coil chain) shall extend diagonally from the wall to the upper extension tubes, terminating in clamp-type fittings.

Southern yellow pine wall pads shall be provided at all wall attachment points. All edges shall be chamfered and pads shall be finished with two finish coats of natural gloss lacquer.

All metal parts shall be painted one (1) coat of flat black enamel. (If special painting of colors is required, specify final painting by painting contractor.)

Specify backboard and goal as required.

00312-000 - WALL-BRACED BACKSTOP

WALL-MOUNTED BACKSTOP WITH CENTER-STRUT® HEIGHT ADJUSTER
- FAN BACKBOARD - 3'-6 1/8" to 10'-0" EXTENSION

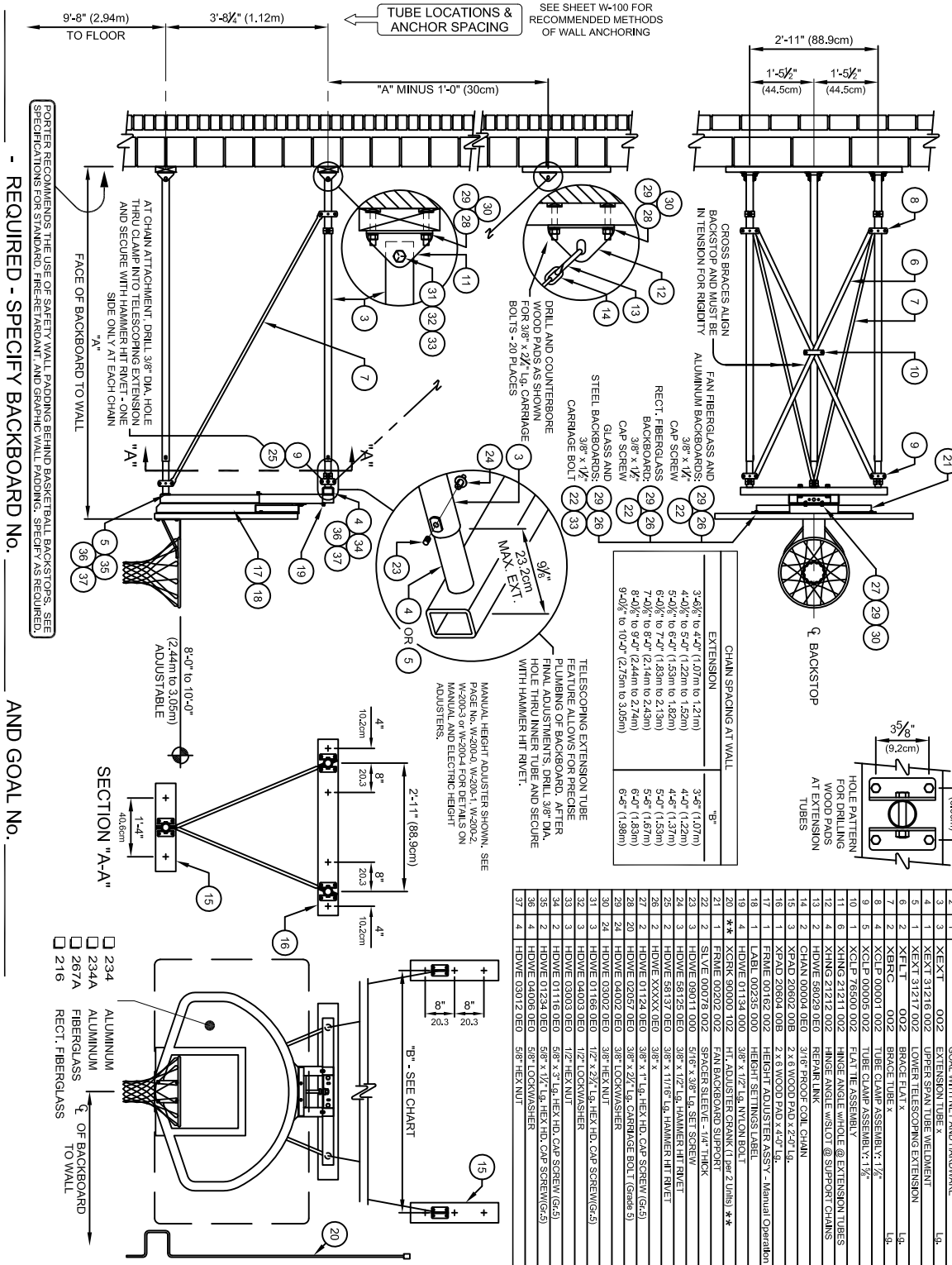
Porter

WALL MOUNT SPECIFICATION SHEET

W-312-F10H

WWW.PORTERATHLETIC.COM/FACILITY

SUPPORT CHAINS MAY BE SECURED TO THE ROOF FRAMING STRUCTURE. SPECIFY TYPE, HEIGHT AND LOCATIONS OF FRAMING WHEN DESIRED.



Porter

888-277-7778 PORTER@PORTERATHLETIC.COM
© COPYRIGHT 2015 PORTER ATHLETIC - ALL RIGHTS RESERVED

PROJECT NUMBER

PROJECT NAME

10/1/2015

00312-000 - WALL-BRACED BACKSTOP

WALL-MOUNTED BACKSTOP WITH CENTER-STRUT® HEIGHT ADJUSTER
- FAN BACKBOARD - 3'-6 $\frac{1}{8}$ " to 10'-0" EXTENSION

SPECIFICATIONS

PORTER No. 00312- WALL BRACED BACKSTOP WITH CENTER-STRUT HEIGHT ADJUSTMENT UNIT FOR RECTANGULAR BACKBOARD

Backstop shall be wall-braced type with face of backboard extended 3' 6-1/8" to 10'-0" from supporting wall (specify).

Extension frames shall be fabricated of three (3) 1-7/8" O.D. tubes with a telescoping end section for ease of installation, and precise plumbing and alignment of backboard with official court markings, even when supported on uneven wall conditions. Upper extensions shall terminate in a heavy wall rectangular tube assembly on standard 2'-11" centers. Extension frame assemblies shall terminate in heavy steel flanges for attachment to wall pads. Backstop shall be braced internally with 7/8" O.D. steel tension braces attached at both ends with precision die-formed clamps for rigidity and support of the Center-Strut® goal mount plate. Additional internal bracing shall consist of 3/16" x 1-1/4" steel tension flats attached at both ends with precision die-formed clamps and joined at their intersection with bolted steel fittings.

Southern yellow pine wall pads shall be provided at all wall attachment points. All edges shall be chamfered and pads shall be finished with two finish coats of natural gloss lacquer.

Height adjustment unit shall be designed to provide an adjustable, direct mount Center-Strut® goal attachment system to eliminate any strain on the backboard, should a player hang on the front mounted goal. Height adjustment units without the prescribed direct mount goal feature will not be approved as equal. Height adjustment feature will allow goal height settings from 8'-0" to the official 10'-0" for use by all age groups. Unit shall be designed for use only with Porter No. 267A fan fiberglass, No. 234 or 234A fan aluminum, or No. 216 rectangular fiberglass backboards and companion front-mount type goal.

Center unitized support frame of height adjustment unit shall be fabricated by dual, 2-3/16" square heavy wall zinc plated guide tubes located on 11-3/16" centers. Ends of guide tubes shall be welded to heavy mounting brackets. Outer dual slide tubes shall support heavy structural steel angle sections which extend downward to accept a direct mount Center-Strut® goal mounting system. Slide tube assembly shall be provided with a heavy, formed steel section to attach a special upper backboard support assembly to secure the unit to the upper two corners of the fan-shaped backboard.

Height adjustment unit shall incorporate a centrally located 3/4" diameter Acme threaded rod equipped with precision, hardened steel roller thrust bearings for ease of operation from the playing floor by means of an awning crank-type mechanism. Height adjustment system shall incorporate an internal, spring-loaded height locking mechanism to automatically lock and hold unit at any desired goal height during play. Lock mechanism automatically releases when height setting changes are made with adjustment crank assembly. Adjustment crank assembly shall be provided with each pair of height adjustment units. A height setting scale shall be located on the side of the unit to visually determine height settings from 8'-0" to 10'-0" in 3" increments.

Limited Lifetime warranty on Porter fan-shaped fiberglass (267A), fan-shaped aluminum (234 or 234A), or rectangular fiberglass (216) backboards when used in conjunction with Porter Center-Strut® height adjustment unit installed on a Porter No. 312 Wall-Braced Backstop.

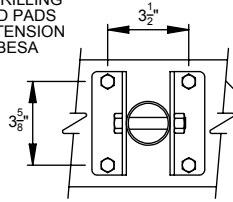
All metal parts shall be painted one (1) coat of flat black enamel. (If special painting of colors is required, specify final painting by painting contractor.)

Specify backboard and goal as required.

90312000 - STATIONARY BACKSTOP

WALL MOUNTED, CENTER-STRUT UNIT
10' TO 12' FACE OF BACKBOARD TO WALL

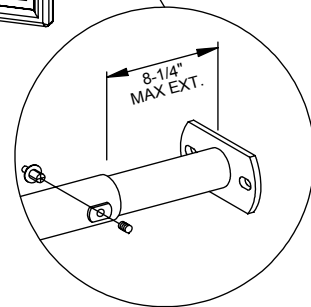
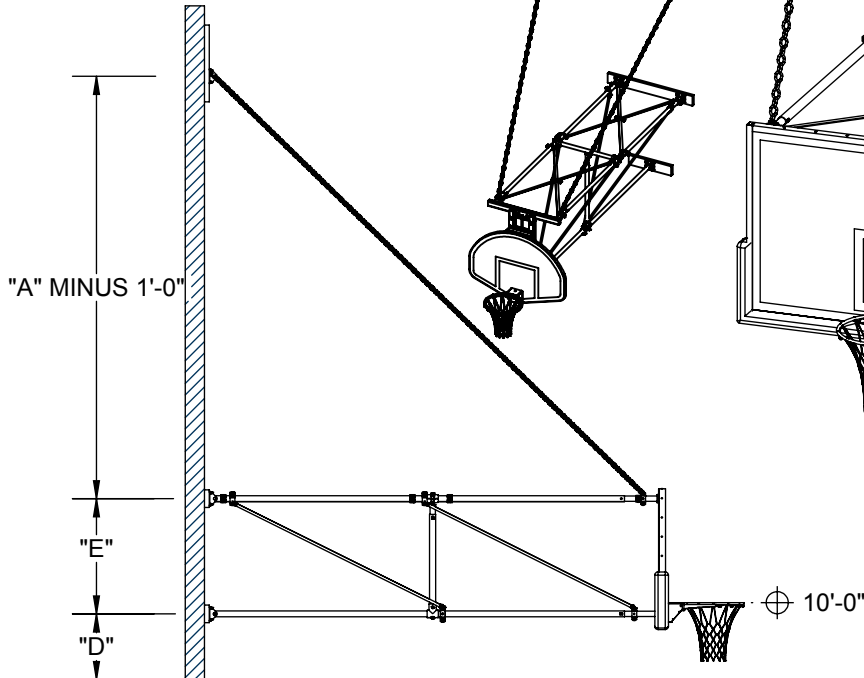
HOLE PATTERN
FOR DRILLING
WOOD PADS
AT EXTENSION
TUBESA



DRILL AND COUNTERBORE
WOOD PADS AS SHOWN
FOR 3/8" x 2-1/4" LG.
CARRIAGE BOLTS

BACKBOARD STYLE (SEE B-200)	"B" CHAIN HANGER DISTANCE	"C" PIPE SUPPORT DISTANCE	"D" HINGE TO FLOOR	"E" VERTICAL PIPE SUPPORT DISTANCE
RECTANGULAR	9'-6" (2.9m)	5'-6" (1.68m)	9'-9" (2.97m)	3'-0" (0.92m)
FAN	7'-6" (2.3m)	2'-11" (0.889m)	9'-8 1/2" (2.96m)	2'-1 1/2" (64.7m)
RECTANGULAR WITH HEIGHT ADJUSTER	7'-6" (2.3m)	2'-11" (0.889m)	9'-8 1/2" (2.96m)	3'-8 1/4" (1.12m)
FAN WITH HEIGHT ADJUSTER	7'-6" (2.3m)	2'-11" (0.889m)	9'-8" (2.94m)	3'-8 1/4" (1.12m)

FAN WITH HEIGHT ADJUSTER
SHOWN FOR COMPARISON



TELESCOPING EXTENSION TUBE
FEATURE ALLOWS FOR PRECISE
PLUMBING OF BACKBOARD. AFTER
FINAL ADJUSTMENTS, DRILL 3/8"
Ø HOLE THRU INNER TUBE AND
SECURE WITH HAMMER HIT RIVET.

- 90312000 WALL MOUNTED, CENTER-STRUT UNIT

- FACE OF BACKBOARD TO WALL ("A")
- BACKBOARD SELECTION
- GOAL SELECTION
- PADDING SELECTION

90312000 - STATIONARY BACKSTOP

WALL MOUNTED, CENTER-STRUT UNIT
10' TO 12' FACE OF BACKBOARD TO WALL

SPECIFICATIONS

Backstop shall be wall-braced type with face of backboard extended 3' 6-1/8" to 10'-0" from supporting wall

Extension frames shall be fabricated of three (3) 1-7/8" O.D. tubes with a telescoping end section for ease of installation, and precise plumbing and alignment of backboard with official court markings, even when supported on uneven wall conditions. Front ends of extension frame assemblies shall terminate in heavy steel flanges for attachment to backside of backboard. Back ends of extension frame assemblies shall be drilled and bolted to precision die-formed hinge angles for attachment to wall pads. Goal shall mount directly through the backboard and into a heavy steel flange Center-Strut® at the lower extension frame to eliminate any strain on the backboard, should a player hang on the front mounted goal.

Backstop shall be braced internally with 7/8" O.D. steel tension braces attached at both ends with precision die-formed clamps for rigidity and support of the Center-Strut® goal mount plate. Additional internal bracing shall consist of 3/16" x 1-1/4" steel tension flats attached at both ends with precision die-formed clamps and joined at their intersection with bolted steel fittings. Two (2) chain supports (3/16" proof coil chain) shall extend diagonally from the wall to the upper extension tubes, terminating in clamp-type fittings.

Southern yellow pine wall pads shall be provided at all wall attachment points. All edges shall be chamfered and pads shall be finished with two finish coats of natural gloss lacquer. Wood pads help distribute loads to walls. Some walls may not require wood pads.

All metal parts shall be powder coated. See swatch card SMPL00048024 for standard color options. (contact Porter for custom color requests)

Backstop provided with specified backboard and goal (see B-200 for options).

WARRANTY

- Wall mounted backstop structure comes with a 10 year limited warranty.
- Other components may be covered by their own warranty (see corresponding specifications for more details).

OPTIONAL ITEMS (SEE SPECIFICATION SHEETS FOR DETAIL)

- Height Adjuster (8' to 10' adjustable goal height) (see chart below)

CENTER-STRUT® HEIGHT ADJUSTER

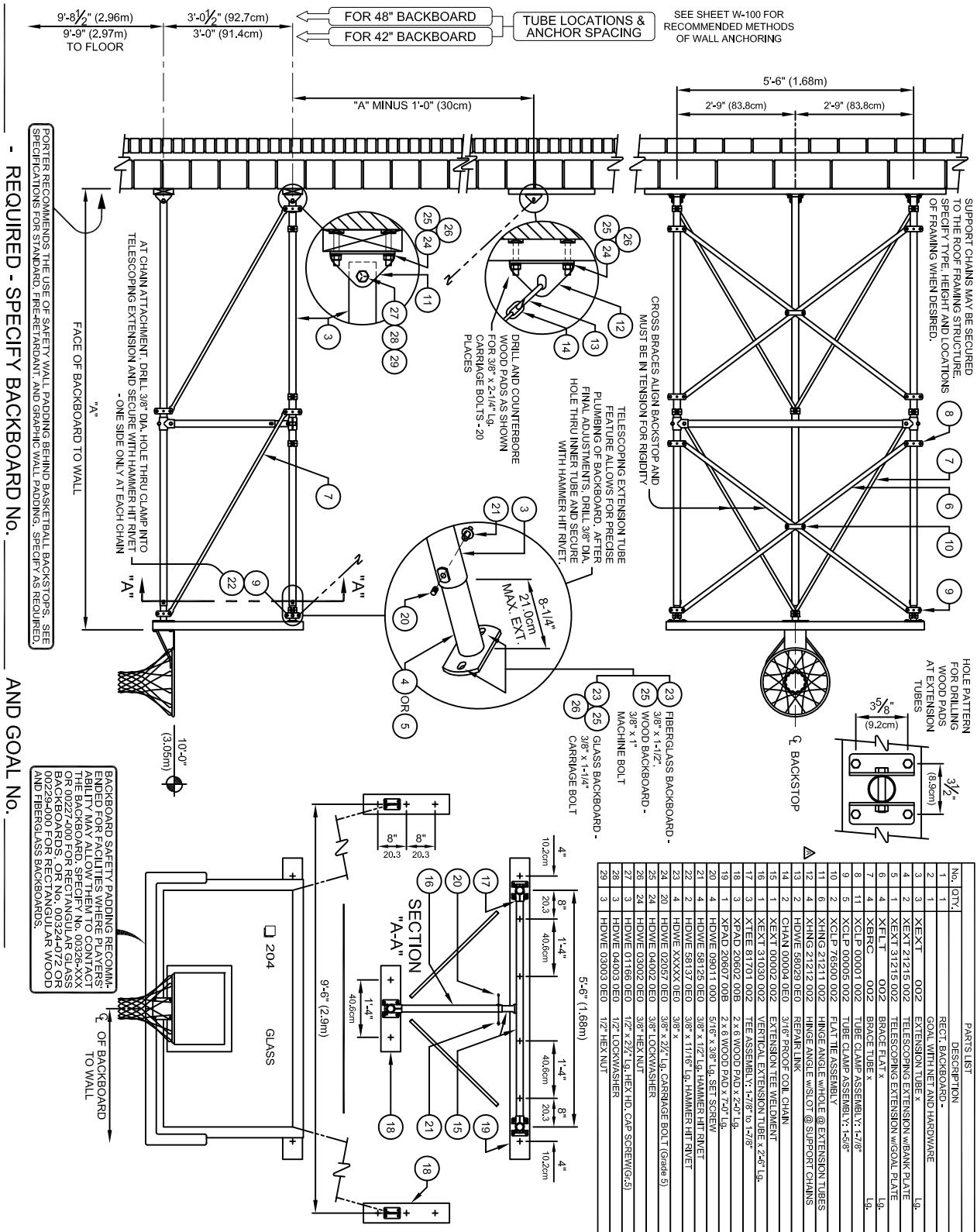
- | | |
|---|---|
| • For Manual Operation, See Page No.: | B-900-506 (Rectangular Boards) B-900-211 (Fan Boards) |
| • For Key Switch Operation, See Page No.: | B-901-506 (Rectangular Boards) B-901-211 (Fan Boards) |
| • For Powr-Stick Operation, See Page No.: | B-902-506 (Rectangular Boards) B-902-211 (Fan Boards) |
| • For Sportsonic® II Operation, See Page No.: | B-903-506 (Rectangular Boards) B-903-211 (Fan Boards) |
| • For Powr-Touch Operation, See Page No. | B-904-506 (Rectangular Boards) B-904-211 (Fan Boards) |

LEED® SUBMITTAL INFORMATION

Credit	Measure
MRc4-Recycled Content	Post Consumer Average 15.0% Post Industrial 0%
MRc5-Regional Materials	Raw materials originate from multiple sources so origin point cannot be determined. Final Manufacturing/Assembly in Champaign, IL 61822

CENTER-STRUT® WALL-MOUNTED BACKSTOP

FOR RECTANGULAR BACKBOARD 10'-0¹/₈" to 12'-0" EXTENSION



No.	QTY.	DESCRIPTION	PARTS LIST
1	1	RECT. BACKBOARD -	
2	1	GOAL WITH NET AND HARDWARE	
3	3	XEXT 002	EXTENSION TUBE x 14.
4	3	XEXT 21215 002	TELSOOPING EXTENSION W/BLANK PLATE
5	1	XEXT 31215 002	TELSOOPING EXTENSION W/GOL PLATE
6	1	XEXT 31215 002	TELSOOPING EXTENSION W/GOL PLATE
7	2	XERC 002	BROCK TUBE x 14.
8	11	XCP 00001 002	TUBE CLAMP ASSEMBLY - 1/2"
9	5	XCP 00005 002	TUBE CLAMP ASSEMBLY - 1/4"
10	2	XCP 76500 002	FLAT THE ASSEMBLY
11	4	XHNS 21211 002	HINGE ANGLE WHOLE @ EXTENSION TUBES
12	4	XHNS 21212 002	HINGE ANGLE WHOLE @ SUPPORT CHAINS
13	4	HDWE 58029 060	REPAIR LINK
14	2	CHAM 00004 002	3/8" PROOF COIL CHAIN
15	1	XEXT 00002 002	EXTENSION TIE W/ELMENT
16	3	XTEE 31030 002	VENTAL EXTENSION TUBE x 24" LG.
17	1	XTEE 81701 002	TEE ASSEMBLY 1/4" to 1/4"
18	3	XPAD 20602 00B	2 x 6 WOOD PAD x 24" LG.
19	1	XPAD 20607 00B	2 x 6 WOOD PAD x 74" LG.
20	4	HDWE 09011 000	5/16" x 3/8" LG. SET SCREW
21	4	HDWE 58125 050	5/16" x 1/2" LG. HAMMER HIT NUT
22	2	HDWE 58137 050	3/8" x 1 1/4" LG. HAMMER HIT NUT
23	4	HDWE XXXXX 060	3/8" x
24	20	HDWE 02057 060	3/8" x 2 1/2" LG. CARRIAGE BOLT (Grade 5)
25	24	HDWE 03002 060	3/8" LOCKWASHER
26	24	HDWE 03002 060	3/8" HEX NUT
27	3	HDWE 01166 060	1/2" x 3/2" LG. HEX HD. CAP SCREW (G.5)
28	3	HDWE 03003 060	1/2" LOCKWASHER
29	3	HDWE 03003 060	1/2" HEX NUT

The Porter logo, featuring the word "porter" in a stylized, outlined font. The letters are thick and blocky, with a registered trademark symbol (®) at the end.

888-277-7778 PORTER@PORTERATHLETIC.COM
©COPYRIGHT 2015 PORTER ATHLETIC - ALL RIGHTS RESERVED

PROJECT NUMBER

PROJECT NAME

10/1/2015

00312-000 - WALL-BRACED BACKSTOP

CENTER-STRUT® WALL-MOUNTED BACKSTOP
FOR RECTANGULAR BACKBOARD 10'-0 $\frac{1}{8}$ " to 12'-0" EXTENSION

SPECIFICATIONS

PORTER No. 00312-_____ CENTER-STRUT®
WALL BRACED BACKSTOP

Backstop shall be wall-braced type with face of backboard extended 10' 0-1/8" to 12'-0" from supporting wall (specify).

Extension frames shall be fabricated of three (3) 1-7/8" O.D. tubes with a telescoping end section for ease of installation, and precise plumbing and alignment of backboard with official court markings, even when supported on uneven wall conditions. Front ends of extension frame assemblies shall terminate in heavy steel flanges for attachment to backside of backboard. Back ends of extension frame assemblies shall be drilled and bolted to precision die-formed hinge angles for attachment to wall pads. Goal shall mount directly through the backboard and into a heavy steel flange Center-Strut® at the lower extension frame to eliminate any strain on the backboard, should a player hang on the front mounted goal.

Backstop shall be braced internally with 7/8" O.D. steel tension braces attached at both ends with precision die-formed clamps for rigidity and support of the Center-Strut® goal mount plate. Additional internal bracing shall consist of 3/16" x 1-1/4" steel tension flats attached at both ends with precision die-formed clamps and joined at their intersection with bolted steel fittings. The three extension frames shall be braced mid-span by 1-7/8" O.D. tubes welded into a 'T' configuration and attached with ductile iron Tee casting assemblies. Two (2) chain supports (3/16" proof coil chain) shall extend diagonally from the wall to the upper extension tubes, terminating in clamp-type fittings.

Southern yellow pine wall pads shall be provided at all wall attachment points. All edges shall be chamfered and pads shall be finished with two finish coats of natural gloss lacquer.

All metal parts shall be painted one (1) coat of flat black enamel. (If special painting of colors is required, specify final painting by painting contractor.)

Specify backboard and goal as required.

PORTER
WWW.PORTERATHLETIC.COM/FACILITY

WALL MOUNT SPECIFICATION SHEET

W-312-R12

WALL-MOUNTED BACKSTOP WITH CENTER-STRUT® HEIGHT ADJUSTER
- RECT. BACKBOARD - 10'-0 $\frac{1}{8}$ " to 12'-0" EXTENSION

W-312-R12H



00312-000 - WALL-MOUNTED BACKSTOP

WALL-MOUNTED BACKSTOP WITH CENTER-STRUT® HEIGHT ADJUSTER
- RECT. BACKBOARD - 10'-0 $\frac{1}{8}$ " to 12'-0" EXTENSION

SPECIFICATIONS

PORTER No. 00312- WALL BRACED BACKSTOP WITH CENTER-STRUT® HEIGHT ADJUSTMENT UNIT FOR RECTANGULAR BACKBOARD

Backstop shall be wall-braced type with face of backboard extended 10' 0-1/8" to 12'-0" from supporting wall (specify).

Extension frames shall be fabricated of three (3) 1-7/8" O.D. tubes with a telescoping end section for ease of installation, and precise plumbing and alignment of backboard with official court markings, even when supported on uneven wall conditions. Upper extensions shall terminate in a heavy wall rectangular tube assembly on standard 2'-11" centers. Extension frame assemblies shall be drilled and bolted to precision die-formed hinge angles for attachment to wall pads. Backstop shall be braced internally with 7/8" O.D. steel tension braces attached at both ends with precision die-formed clamps for rigidity and support of the Center-Strut goal mount plate. Additional internal bracing shall consist of 3/16" x 1-1/4" steel tension flats attached at both ends with precision die-formed clamps and joined at their intersection with bolted steel fittings. The three extension frames shall be braced mid-span by 1-7/8" O.D. tubes welded into a 'T' configuration and attached with ductile iron Tee casting assemblies. Two (2) chain supports (3/16" proof coil chain) shall extend diagonally from the wall to the upper extension tubes, terminating in clamp-type fittings.

Southern yellow pine wall pads shall be provided at all wall attachment points. All edges shall be chamfered and pads shall be finished with two finish coats of natural gloss lacquer.

Height adjustment unit shall be designed to provide an adjustable, direct mount Center-Strut® goal attachment system to eliminate any strain on the backboard, should a player hang on the front mounted goal. Height adjustment units without the prescribed direct mount goal feature will not be approved as equal. Height adjustment feature will allow goal height settings from 8'-0" to the official 10'-0" for use by all age groups. Unit shall be designed for use with any official size (4' x 6' or 3'-6" x 6') Porter rectangular backboard and companion front-mount type goal.

Center unitized support frame of height adjustment unit shall be fabricated by dual, 2-3/16" square heavy wall zinc plated guide tubes located on 11-3/16" centers. Ends of guide tubes shall be welded to heavy mounting brackets. Outer dual slide tubes shall support heavy structural steel angle sections which extend downward to accept a direct mount Center-Strut® goal mounting system. Slide tube assembly shall be provided with a heavy, formed steel section to attach a horizontal backboard support assembly to secure the unit to the upper two corners of the rectangular backboard on standard (5'-6") mounting centers.

Height adjustment unit shall incorporate a centrally located 3/4" diameter Acme threaded rod equipped with precision, hardened steel roller thrust bearings for ease of operation from the playing floor by means of an awning crank-type mechanism. Height adjustment system shall incorporate an internal, spring-loaded height locking mechanism to automatically lock and hold unit at any desired goal height during play. Lock mechanism automatically releases when height setting changes are made with adjustment crank assembly. Adjustment crank assembly shall be provided with each pair of height adjustment units. A height setting scale shall be located on the side of the unit to visually determine height settings from 8'-0" to 10'-0" in 3" increments.

Limited lifetime warranty on all Porter rectangular backboards when used in conjunction with Porter Center-Strut height adjustment unit installed on a Porter No. 312 Wall-Braced Backstop.

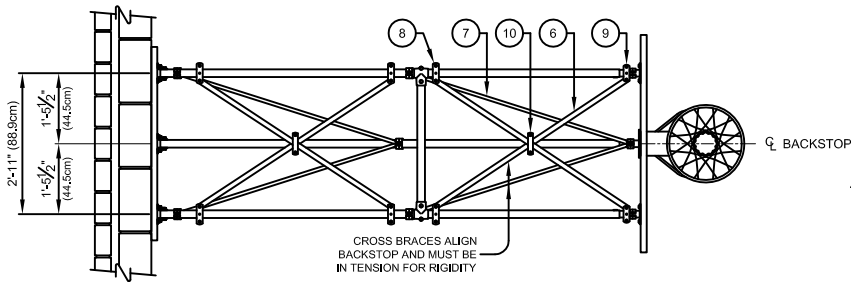
All metal parts shall be painted one (1) coat of flat black enamel. (If special painting of colors is required, specify final painting by painting contractor.)

Specify backboard and goal required.

00312-000 - WALL-MOUNTED BACKSTOP

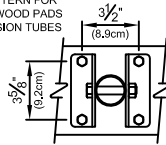
CENTER-STRUT® WALL-MOUNTED BACKSTOP FOR FAN BACKBOARD

10'-0 $\frac{1}{8}$ " to 12'-0" EXTENSION



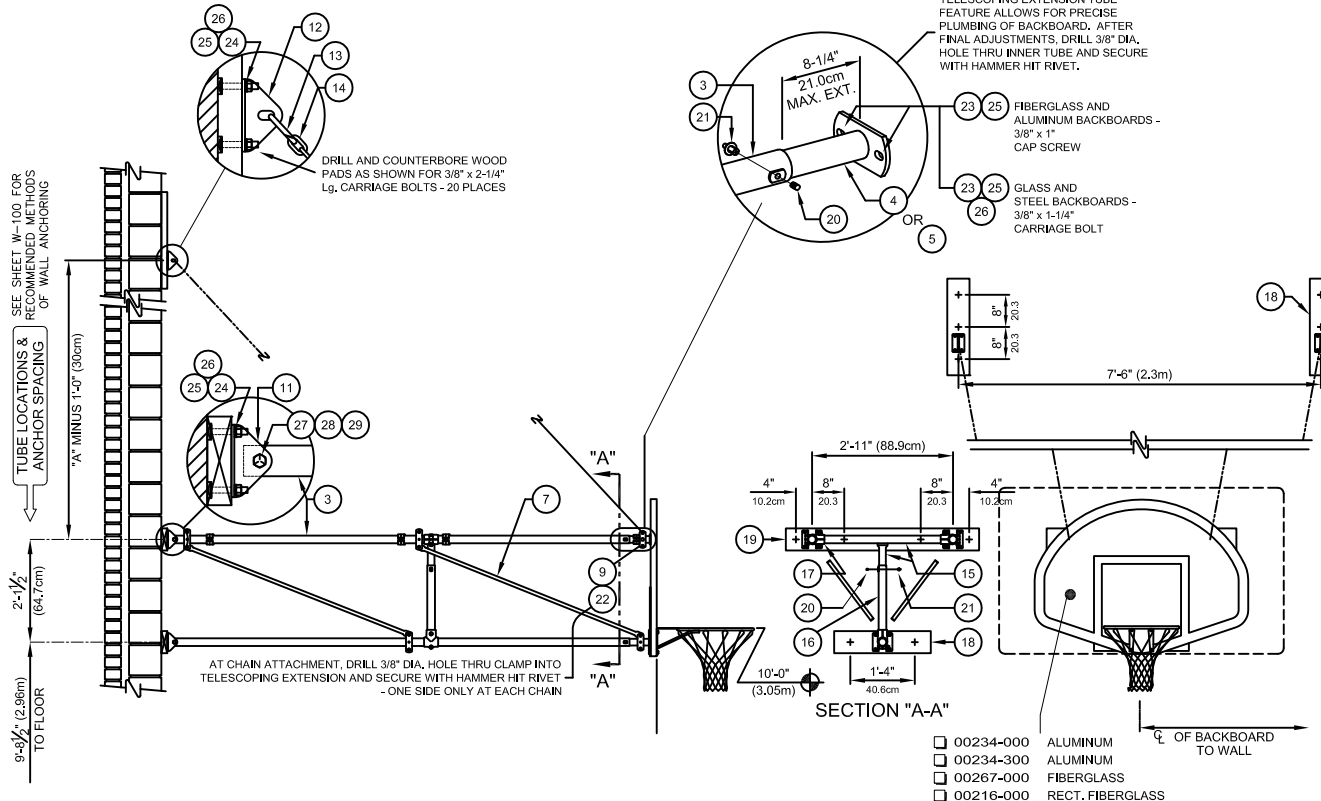
SUPPORT CHAINS MAY BE SECURED TO THE ROOF FRAMING STRUCTURE, SPECIFY TYPE, HEIGHT AND LOCATIONS OF FRAMING WHEN DESIRED.

HOLE PATTERN FOR DRILLING WOOD PADS AT EXTENSION TUBES



No.	QTY.	DESCRIPTION
1	1	BACKBOARD:
2	1	GOAL WITH NET AND HARDWARE
3	1	XEXT 002 EXTENSION TUBE x Lg.
4	2	XEXT 21215 002 TELESCOPING EXTENSION w/BANK PLATE
5	1	XEXT 31215 002 TELESCOPING EXTENSION w/GOAL PLATE
6	4	XFLT 002 BRACE FLAT x Lg.
7	4	XBRC 002 BRACE TUBE x Lg.
8	11	XCPLP 00001 002 TUBE CLAMP ASSEMBLY: 1 1/4"
9	5	XCPLP 00005 002 TUBE CLAMP ASSEMBLY: 1 1/2"
10	2	XCPLP 76500 002 FLAT TIE ASSEMBLY
11	6	XHNG 21211 002 HINGE ANGLE w/HOLE @ EXTENSION TUBES
12	4	XHNG 21212 002 HINGE ANGLE w/SLOT @ SUPPORT CHAINS
13	2	HDWE 58029 0E0 REPAIR LINK
14	2	CHAIN 00004 0E0 3/16" PROOF COIL CHAIN
15	1	XEXT 00001 002 EXTENSION TEE WELDMENT
16	1	XEXT 31018 002 VERTICAL EXTENSION TUBE x 1'-6" Lg.
17	3	XTEE 81701 002 TEE ASSEMBLY: 1-7/8" to 1-7/8"
18	3	XPAD 20602 00B 2 x 6 WOOD PAD x 2'-0" Lg.
19	1	XPAD 20604 00B 2 x 6 WOOD PAD x 4'-0" Lg.
20	4	HDWE 09011 000 5/16" x 3/8" Lg. SET SCREW
21	4	HDWE 58125 0E0 3/8" x 1/2" Lg. HAMMER HIT RIVET
22	2	HDWE 58137 0E0 3/8" x 11/16" Lg. HAMMER HIT RIVET
23	4	HDWE 0E0 3/8" x
24	20	HDWE 02057 0E0 3/8" x 2 1/2" Lg. CARRIAGE BOLT (Grade 5)
25	24	HDWE 04002 0E0 3/8" LOCKWASHER
26	24	HDWE 03002 0E0 3/8" HEX NUT
27	3	HDWE 01166 0E0 1/2" x 2 1/2" Lg. HEX HD. CAP SCREW (Gr.5)
28	3	HDWE 04003 0E0 1/2" LOCKWASHER
29	3	HDWE 03003 0E0 1/2" HEX NUT
30	1	FITG 00222 000 SPACER KIT (No. 216 Board)

TELESCOPING EXTENSION TUBE FEATURE ALLOWS FOR PRECISE PLUMBING OF BACKBOARD. AFTER FINAL ADJUSTMENTS, DRILL 3/8" DIA. HOLE THRU INNER TUBE AND SECURE WITH HAMMER HIT RIVET.



- ☐ 00234-000 ALUMINUM
- ☐ 00234-300 ALUMINUM
- ☐ 00267-000 FIBERGLASS
- ☐ 00216-000 RECT. FIBERGLASS

- QUANTITY REQUIRED

- BACKBOARD SELECTION

- GOAL SELECTION

Porter

888-277-7778 PORTER@PORTERATHLETIC.COM
© COPYRIGHT 2014 PORTER ATHLETIC - ALL RIGHTS RESERVED

PROJECT NUMBER

PROJECT NAME

Porter

WWW.PORTERATHLETIC.COM/FACILITY

WALL MOUNT SPECIFICATION SHEET

W-312-F12

4/28/2014

00312-000 - WALL-MOUNTED BACKSTOP

CENTER-STRUT® WALL-MOUNTED BACKSTOP FOR FAN BACKBOARD
10'-0 $\frac{1}{8}$ " to 12'-0" EXTENSION

SPECIFICATIONS

PORTER No. 00312-___ CENTER-STRUT® WALL-BRACED BACKSTOP
FOR FAN BACKBOARD AND RECTANGULAR FIBERGLASS BACKBOARD

Backstop shall be wall-braced type with face of backboard extended 10' 0-1/8" to 12'-0" from supporting wall(specify).

Extension frames shall be fabricated of three (3) 1-7/8" O.D. tubes with a telescoping end section for ease of installation, and precise plumbing and alignment of backboard with official court markings, even when supported on uneven wall conditions. Front ends of extension frame assemblies shall terminate in heavy steel flanges for attachment to backside of backboard. Extension frame assemblies shall be drilled and bolted to precision die-formed hinge angles for attachment to wall pads. Goal shall mount directly through the backboard and into a heavy steel flange Center-Strut® at the lower extension frame to eliminate any strain on the backboard, should a player hang on the front mounted goal.

Backstop shall be braced internally with 7/8" O.D. steel tension braces attached at both ends with precision die-formed clamps for rigidity and support of the Center-Strut® goal mount plate. Additional internal bracing shall consist of 3/16" x 1-1/4" steel tension flats attached at both ends with precision die-formed clamps and joined at their intersection with bolted steel fittings. The three extension frames shall be braced mid-span by 1-7/8" O.D. tubes welded into a 'T' configuration and attached with ductile iron Tee casting assemblies. Two (2) chain supports (3/16" proof coil chain) shall extend diagonally from the wall to the upper extension tubes, terminating in clamp-type fittings.

Southern yellow pine wall pads shall be provided at all wall attachment points. All edges shall be chamfered and pads shall be finished with two finish coats of natural gloss lacquer.

All metal parts shall be painted one (1) coat of flat black enamel. (If special painting of colors is required, specify final painting by painting contractor.)

Specify backboard and goal as required.

WALL-MOUNTED BACKSTOP WITH CENTER-STRUT® HEIGHT ADJUSTER -
FAN BACKBOARD - 10'-0 $\frac{1}{8}$ " to 12'-0" EXTENSION

WALL MOUNT SPECIFICATION SHEET

10/1/2015



PROJECT NAME

00312-000 - WALL-MOUNTED BACKSTOP

WALL-MOUNTED BACKSTOP WITH CENTER-STRUT® HEIGHT ADJUSTER -
FAN BACKBOARD - 10'-0 $\frac{1}{8}$ " to 12'-0" EXTENSION

SPECIFICATIONS

PORTER No. 00312- WALL-BRACED BACKSTOP WITH CENTER-STRUT® HEIGHT ADJUSTMENT UNIT FOR FAN BACKBOARD AND RECTANGULAR FIBERGLASS BACKBOARD

Backstop shall be wall-braced type with face of backboard extended 10' 0-1/8" to 12'-0" from supporting wall (specify).

Extension frames shall be fabricated of three (3) 1-7/8" O.D. tubes with a telescoping end section for ease of installation, and precise plumbing and alignment of backboard with official court markings, even when supported on uneven wall conditions. Upper extensions shall terminate in a heavy wall rectangular tube assembly on standard 2'-11" centers. Extension frame assemblies shall be drilled and bolted to precision die-formed hinge angles for attachment to wall pads. Backstop shall be braced internally with 7/8" O.D. steel tension braces attached at both ends with precision die-formed clamps for rigidity and support of the Center-Strut® goal mount plate. Additional internal bracing shall consist of 3/16" x 1-1/4" steel tension flats attached at both ends with precision die-formed clamps and joined at their intersection with bolted steel fittings. The three extension frames shall be braced mid-span by 1-7/8" O.D. tubes welded into a 'T' configuration and attached with ductile iron Tee casting assemblies. Two (2) chain supports (3/16" proof coil chain) shall extend diagonally from the wall to the upper extension tubes, terminating in clamp-type fittings.

Southern yellow pine wall pads shall be provided at all wall attachment points. All edges shall be chamfered and pads shall be finished with two finish coats of natural gloss lacquer.

Height adjustment unit shall be designed to provide an adjustable, direct mount Center-Strut® goal attachment system to eliminate any strain on the backboard, should a player hang on the front mounted goal. Height adjustment units without the prescribed direct mount goal feature will not be approved as equal. Height adjustment feature will allow goal height settings from 8'-0" to the official 10'-0" for use by all age groups. Unit shall be designed for use only with Porter No. 267A fan fiberglass, No. 234 or 234A fan aluminum, or No. 216 rectangular fiberglass backboards and companion front-mount type goal.

Center unitized support frame of height adjustment unit shall be fabricated by dual, 2-3/16" square heavy wall zinc plated guide tubes located on 11-3/16" centers. Ends of guide tubes shall be welded to heavy mounting brackets. Outer dual slide tubes shall support heavy structural steel angle sections which extend downward to accept a direct mount Center-Strut® goal mounting system. Slide tube assembly shall be provided with a heavy, formed steel section to attach a special upper backboard support assembly to secure the unit to the upper two corners of the fan-shaped backboard.

Height adjustment unit shall incorporate a centrally located 3/4" diameter Acme threaded rod equipped with precision, hardened steel roller thrust bearings for ease of operation from the playing floor by means of an awning crank-type mechanism. Height adjustment system shall incorporate an internal, spring-loaded height locking mechanism to automatically lock and hold unit at any desired goal height during play. Lock mechanism automatically releases when height setting changes are made with adjustment crank assembly. Adjustment crank assembly shall be provided with each pair of height adjustment units. A height setting scale shall be located on the side of the unit to visually determine height settings from 8'-0" to 10'-0" in 3" increments.

Limited Lifetime warranty on Porter fan-shaped fiberglass (267A), fan-shaped aluminum (234 or 234A), or rectangular fiberglass (216) backboards when used in conjunction with Porter Center-Strut® height adjustment unit installed on a Porter No. 312 Wall-Braced Backstop.

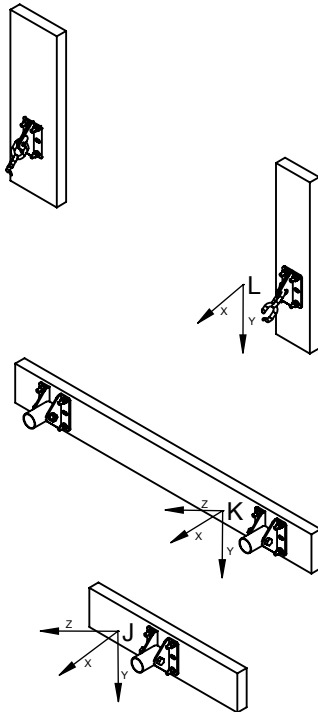
All metal parts shall be painted one (1) coat of flat black enamel. (If special painting of colors is required, specify final painting by painting contractor.)

Specify backboard and goal as required.

90312000 - LOADING AND ANCHORING

LOADING

LOADING BASED ON 300 LB VERTICAL LOAD, 200 LB SIDE LOAD AND 200 LB HORIZONTAL LOAD AT RIM

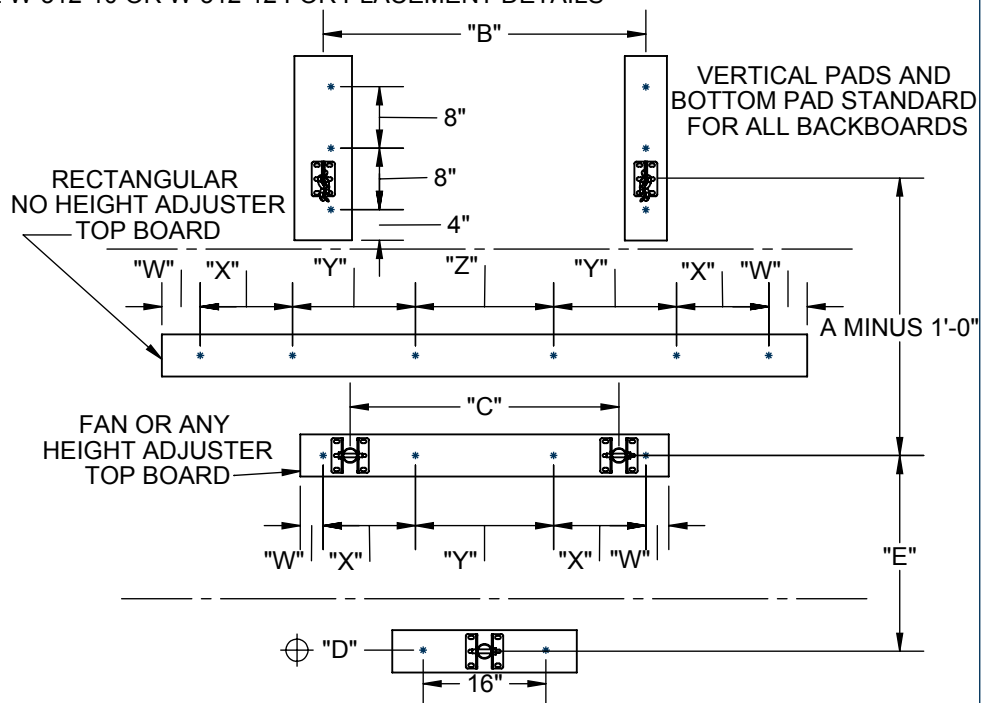


FACE OF BACKBOARD TO WALL AND BACKBOARD STYLE	J _x	J _y	J _z	K _x	K _y	K _z	L _x	L _y
UP TO 3'-0" RECTANGULAR	-974 LBS	209 LBS	183 LBS	-286 LBS	209 LBS	8 LBS	---	---
UP TO 3'-0" FAN	-1120 LBS	169 LBS	173 LBS	-572 LBS	169 LBS	14 LBS	---	---
UP TO 3'-0" WITH HEIGHT ADJUSTER	-932 LBS	247 LBS	184 LBS	-376 LBS	247 LBS	8 LBS	---	---
UP TO 6'-0" RECTANGULAR	-499 LBS	48 LBS	183 LBS	636 LBS	-151 LBS	8 LBS	404 LBS	381 LBS
UP TO 6'-0" FAN	-717 LBS	49 LBS	173 LBS	765 LBS	-138 LBS	14 LBS	333 LBS	365 LBS
UP TO 6'-0" WITH HEIGHT ADJUSTER	-720 LBS	34 LBS	184 LBS	964 LBS	-173 LBS	8 LBS	484 LBS	394 LBS
UP TO 9'-0" RECTANGULAR	-639 LBS	59 LBS	183 LBS	689 LBS	-84 KBS	8 LBS	361 LBS	329 LBS
UP TO 9'-0" FAN	-955 LBS	61 LBS	173 LBS	901 LBS	-75 LBS	14 LBS	295 LBS	320 LBS
UP TO 9'-0" WITH HEIGHT ADJUSTER	-939 LBS	47 LBS	184 LBS	1102 LBS	-99 LBS	8 LBS	438 LBS	337 LBS
UP TO 12'-0" RECTANGULAR	-829 LBS	89 LBS	183 LBS	762 LBS	-40 LBS	8 LBS	350 LBS	315 LBS
UP TO 12'-0" FAN	-1244 LBS	85 LBS	173 LBS	1055 LBS	-35 LBS	14 LBS	284 LBS	306 LBS
UP TO 12'-0" WITH HEIGHT ADJUSTER	-1188 LBS	72 LBS	184 LBS	1262 LBS	-55 LBS	8 LBS	423 LBS	318 LBS

NOTE: HEAVIEST BACKBOARD OF EACH STYLE SHOWN, SOME BACKBOARDS MAY REDUCE LOADS

SUGGESTED ANCHORING LOCATIONS SEE W-312-10 OR W-312-12 FOR PLACEMENT DETAILS

"A" FACE OF BACKBOARD TO WALL	"B" CHAIN HANGER DISTANCE (RECTANGULAR NO HEIGHT ADJUSTER)	"B" CHAIN HANGER DISTANCE (FAN OR ANY HEIGHT ADJUSTER)
6" to 3'-6"	NO CHAIN	---
3' 6-1/8" to 4'-0"	5'-6" (1.68m)	3'-6" (1.07m)
4' 0-1/8" to 5'-0"	6'-0" (1.83m)	4'-0" (1.22m)
5' 0-1/8" to 6'-0"	6'-6" (1.98m)	4'-6" (1.37m)
6' 0-1/8" to 7'-0"	7'-0" (2.14m)	5'-0" (1.53m)
7' 0-1/8" to 8'-0"	7'-6" (2.28m)	5'-6" (1.67m)
8' 0-1/8" to 9'-0"	8'-0" (2.77m)	6'-0" (1.83m)
9' 0-1/8" to 10'-0"	8'-6" (2.59m)	6'-6" (1.98m)
10' 0-1/8" to 11'-0"	9'-6" (2.9m)	7'-6" (2.3m)
11' 0-1/8" to 12'-0"	9'-6" (2.9m)	7'-6" (2.3m)



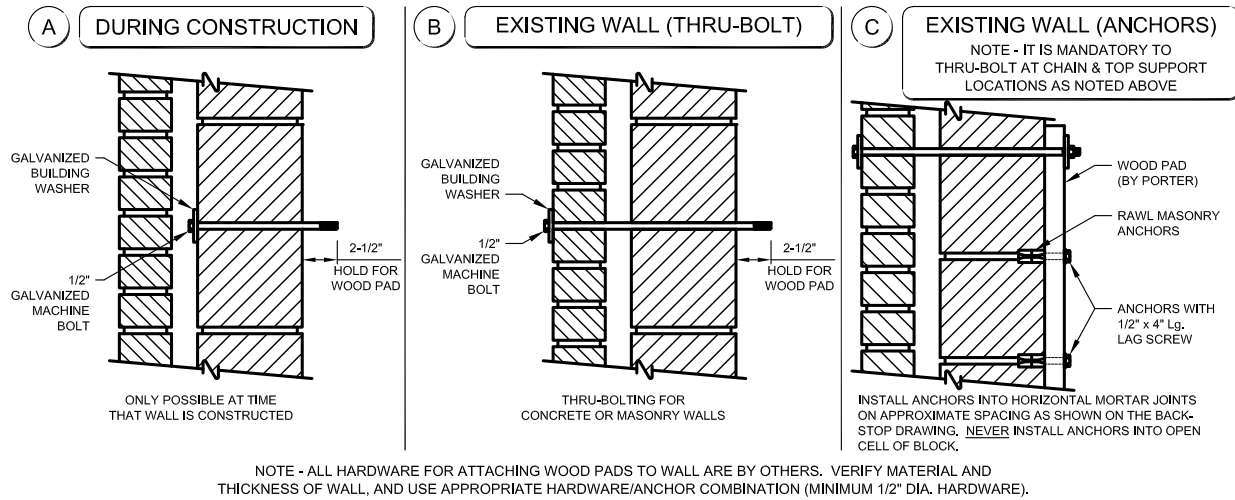
BACKBOARD STYLE	"W"	"X"	"Y"	"Z"	"C" PIPE SUPPORT DISTANCE	"D" HINGE TO FLOOR	"E" VERTICAL PIPE SUPPORT DISTANCE
RECTANGULAR	5" (0.127m)	12" (0.30m)	16" (0.41m)	18" (0.46m)	5'-6" (1.68m)	9'-9" (2.97m)	3'-0" (0.92m)
FAN	3" (0.076m)	12" (0.30m)	---	18" (0.46m)	2'-11" (0.889m)	9'-8 1/2" (2.96m)	2'-1 1/2" (0.65m)
RECTANGULAR WITH HEIGHT ADJUSTER	3" (0.076m)	12" (0.30m)	---	18" (0.46m)	2'-11" (0.889m)	9'-8 1/2" (2.96m)	3'-8 1/4" (1.12m)
FAN WITH HEIGHT ADJUSTER	3" (0.076m)	12" (0.30m)	---	18" (0.46m)	2'-11" (0.889m)	9'-8" (2.94m)	3'-8 1/4" (1.12m)

ANCHORING DETAILS

FOR WALL-MOUNTED BACKSTOPS

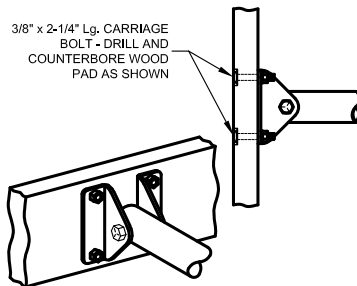
METHODS OF ANCHORING

WARNING  IT IS MANDATORY TO THRU-BOLT A MINIMUM OF TWO LOCATIONS AT THE CHAIN SUPPORT WOOD PAD(S), AND THE TOP TWO WALL LOCATIONS AT THE BACKSTOP EXTENSION PIPE SUPPORT WOOD PAD(S).



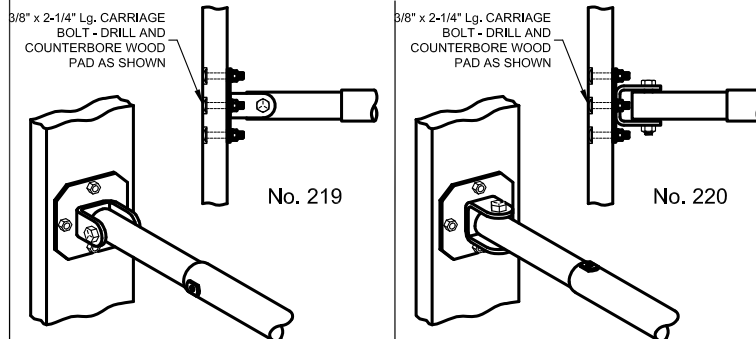
EXTENSION PIPE ANCHOR

FOR STATIONARY BACKSTOPS - 312's



EXTENSION PIPE HINGE ANCHOR

FOR FOLDING BACKSTOPS - 219's AND 220's



POINTS TO REMEMBER

1. THIS IS A PERMANENT STRUCTURE.
2. BACKSTOP MUST BE ANCHORED TO A VERTICAL WALL CAPABLE OF SUPPORT OF THE BACKBOARD AT THE EXTENSION REQUIRED.
3. THRU-BOLTING OF AT LEAST THE TOP TWO WALL LOCATIONS (SEE DETAIL A OR B ABOVE) IS MANDATORY ON ALL INSTALLATIONS.
4. ON NON-FOLDING BACKSTOPS (312's), THE DIAGONAL SUPPORT CHAINS MAY BE SECURED TO THE ROOF FRAMING IF NECESSARY TO REDUCE WALL LOADING. (CONTACT THE FACTORY FOR ADDITIONAL HARDWARE REQUIREMENTS).
5. ON STATIONARY BACKSTOPS (312's), OFFSETS CAN BE COMPENSATED FOR BY LENGTH OF EXTENSION PIPES (SPECIFY).
6. ON FOLDING BACKSTOPS (219's AND 220's), ATTACHMENTS AT WALL MUST BE IN ALIGNMENT (NO OFFSETS OR PROJECTIONS). IF OFFSETS EXIST, BLOCKING AND/OR ADDITIONAL STRUCTURAL SUPPORT MUST BE SUPPLIED (BY OTHERS) TO COMPENSATE FOR THE OFFSET.

WALL DESCRIPTION

- ☐ BLOCK _____
- ☐ BRICK _____
- ☐ OTHER _____

TOTAL THICKNESS _____

FOR (VERTICAL) STUD WALLS, SUBSTITUTE HORIZONTAL PADS FOR VERTICAL PADS. RECOMMEND SOLID BLOCKING AT ALL ANCHOR POINTS, WITH BLOCKING DESIGNED BY THE ARCHITECT/STRUCTURAL ENGINEER.

SEE OPPOSITE SIDE OF THIS SHEET FOR TOTAL WEIGHTS OF WALL-MOUNTED BACKSTOPS

porter[®]

888-277-7778 PORTER@PORTERATHLETIC.COM
©COPYRIGHT 2018 PORTER ATHLETIC - ALL RIGHTS RESERVED

PROJECT NUMBER _____

PROJECT NAME _____

www.porterathletic.com/facility

ANCHORING DETAIL SHEET

W-100

7/20/2018

ANCHORING DETAILS

TOTAL WEIGHTS FOR WALL-MOUNTED BACKSTOPS NOTE - ALL WEIGHTS ARE IN POUNDS

* BACKBOARD MODEL No.	WEIGHT OF A No. 312 STATIONARY BACKSTOP (WITHOUT HEIGHT ADJUSTER) AT:				
	2' Ext.	5' Ext.	7' Ext.	10' Ext.	12' Ext.
00204-000	296	326	341	363	424
00206-000	316	346	361	383	444
00211-000	176	206	221	243	304
00224-300	280	310	325	347	408
00226-000	148	178	193	215	276
00228-300	248	278	293	315	376
00231-000	174	206	223	247	296
00232-300	306	336	351	373	434
00234-___	126	158	175	199	248
00238-300	284	314	329	351	412
00267-698	111	143	160	184	233

* BACKBOARD MODEL No.	WEIGHT OF A No. 312 STATIONARY BACKSTOP (WITH HEIGHT ADJUSTER) AT:				
	2' Ext.	5' Ext.	7' Ext.	10' Ext.	12' Ext.
00208-000	387	440	455	481	531
00206-000	407	460	475	501	551
00211-000	267	320	335	361	411
00224-300	371	424	439	465	515
00226-000	239	292	307	333	383
00228-300	339	392	407	433	483
00231-000	N/A	N/A	N/A	N/A	N/A
00232-300	397	450	465	491	541
00234-___	214	267	282	308	358
00238-300	375	428	443	469	519
00267-698	199	252	267	293	343

* BACKBOARD MODEL No.	WEIGHT OF A No. 219 FOLD-UP BACKSTOP (WITHOUT HEIGHT ADJUSTER) AT:			
	4' Ext.	7' Ext.	10' Ext.	12' Ext.
00204-000	392	413	437	500
00206-000	412	433	457	520
00211-000	253	274	298	380
00224-300	376	397	421	484
00226-000	225	246	270	352
00228-300	325	346	370	452
00231-000	266	289	315	362
00232-300	402	423	447	510
00234-___	208	231	257	314
00238-300	361	382	406	488
00267-000	193	216	242	299

* BACKBOARD MODEL No.	WEIGHT OF A No. 219 FOLD-UP BACKSTOP (WITH HEIGHT ADJUSTER) AT:			
	4' Ext.	7' Ext.	10' Ext.	12' Ext.
00208-000	507	530	557	602
00206-000	527	550	577	622
00211-000	387	410	437	482
00224-300	491	514	541	586
00226-000	359	382	409	454
00228-300	459	482	509	554
00231-000	N/A	N/A	N/A	N/A
00232-300	517	540	567	612
00234-___	334	357	384	429
00238-300	495	518	545	590
00267-698	319	342	369	414

* BACKBOARD MODEL No.	WEIGHT OF A No. 220 FOLD-UP BACKSTOP (WITHOUT HEIGHT ADJUSTER) AT:			
	4' Ext.	7' Ext.	10' Ext.	12' Ext.
00204-000	333	355	383	427
00206-000	353	375	403	449
00211-000	213	235	263	309
00224-300	317	339	367	411
00226-000	185	207	235	279
00228-300	285	307	335	379
00231-000	210	233	261	301
00232-300	343	365	393	439
00234-___	162	185	213	253
00238-300	321	343	371	417
00267-000	147	170	198	238

* BACKBOARD MODEL No.	WEIGHT OF A No. 220 FOLD-UP BACKSTOP (WITH HEIGHT ADJUSTER) AT:			
	4' Ext.	7' Ext.	10' Ext.	12' Ext.
00208-000	470	492	519	568
00206-000	490	512	539	588
00211-000	350	372	399	448
00224-300	454	476	503	552
00226-000	322	344	371	420
00228-300	422	444	471	520
00231-000	N/A	N/A	N/A	N/A
00232-300	480	502	529	578
00234-___	297	319	346	395
00238-300	458	480	507	556
00267-698	282	304	331	380

* REFER TO THE PORTER ARCHITECT'S MANUAL FOR
COMPLETE BACKBOARD SPECIFICATIONS.

ISSUED JULY 20, 2018 , SUBJECT TO CURRENT MANUFACTURING PROCEDURES AND CHANGES
COPYRIGHT 2018 - PORTER ATHLETIC - ALL RIGHTS RESERVED
PORTER@PORTERATHLETIC.COM

PORTER
WWW.PORTERATHLETIC.COM/FACILITY

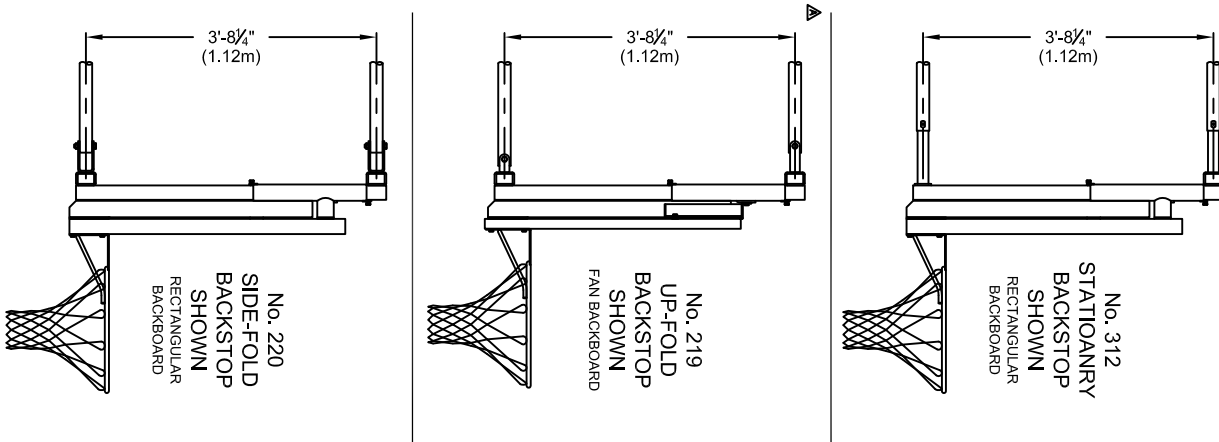
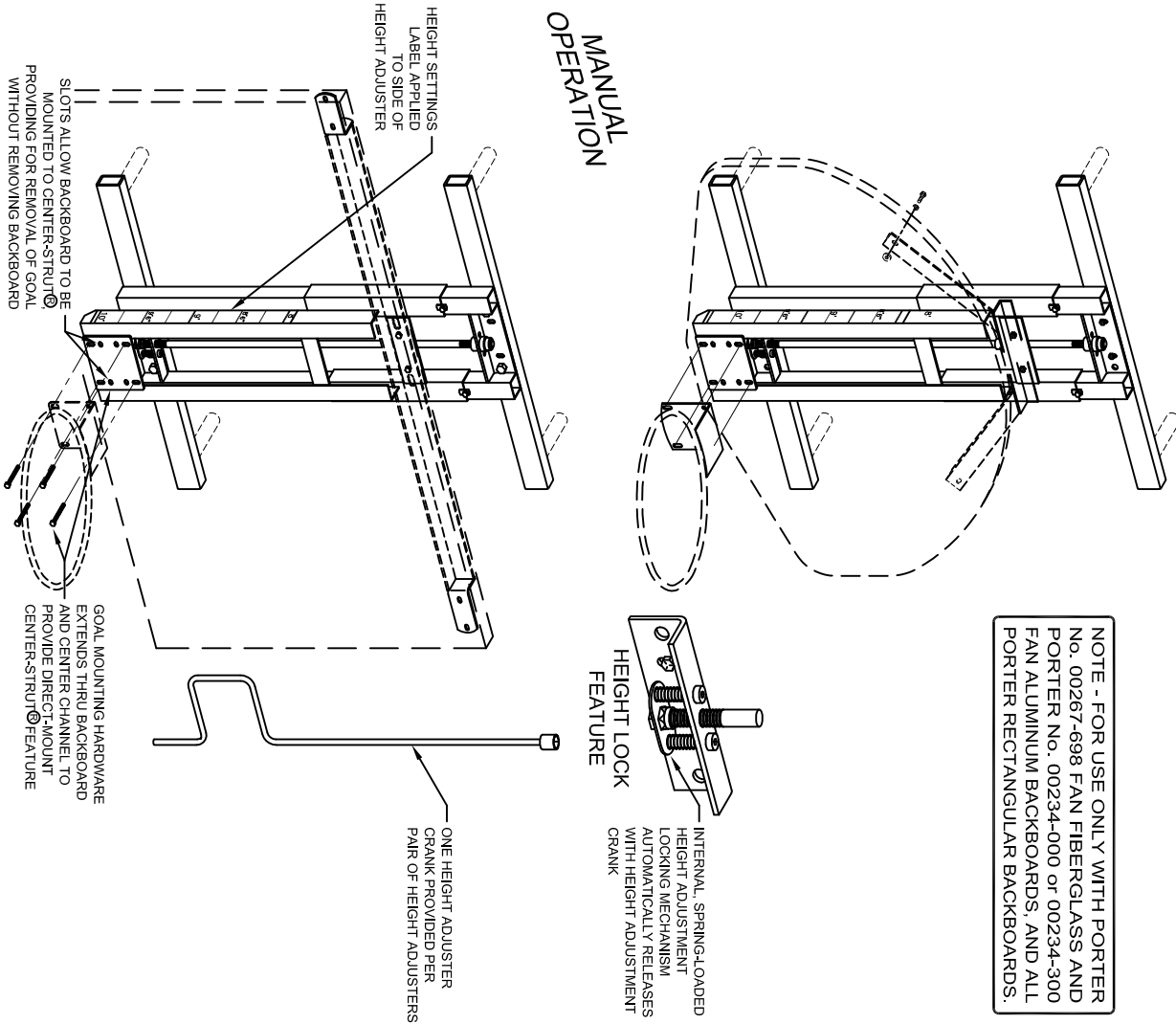
ANCHORING DETAIL SHEET

W-100

7/20/2018

MANUAL OPERATION

CENTER-STRUT® HEIGHT ADJUSTMENT SYSTEM FOR WALL-MOUNTED BACKSTOPS - MANUAL OPERATION



MANUAL OPERATION

CENTER-STRUT® HEIGHT ADJUSTMENT SYSTEM FOR WALL-MOUNTED BACKSTOPS - MANUAL OPERATION

SPECIFICATIONS

PORTER No. 00 -211 and 00 -506

CENTER-STRUT® HEIGHT ADJUSTMENT SYSTEM WITH MANUAL OPERATION FOR USE ON WALL-MOUNTED BACKSTOPS

Height adjustment unit shall be designed for use with No. 312, 219 and 220 series wall-mounted basketball backstop support systems to provide an adjustable, direct mount (Center-Strut®) goal attachment system to eliminate any strain on the backboard should a player hang on the front mounted goal (conforms to the latest NCAA recommendation). Height adjustment units without the prescribed direct mount goal feature will not be approved as equal. Height adjustment feature will allow goal height settings from 8'-0" to the official 10'-0" for use by all age groups. Unit shall be designed for use only with Porter No. 00267-698 fan fiberglass or No. 00234-000 or 00234-300 fan aluminum backboards, or with any official size (4' x 6', or 3'-6" x 6') Porter rectangular backboard.

Center unitized support frame shall be fabricated by dual, 2-3/16" square heavy wall zinc plated guide tubes located on 11-3/16" centers. Ends of guide tubes shall be welded to heavy, formed mounting brackets. Outer dual slide tubes shall support heavy structural steel angle sections which extend downward to accept a direct mount (Center-Strut®) goal mounting system. Slide tube assembly shall be provided with a heavy steel section to attach a special upper backboard support assembly to secure the unit to the upper two corners of the backboard.

Height adjustment unit shall incorporate a centrally located 3/4" diameter acme threaded rod equipped with precision, hardened steel roller thrust bearings for ease of operation from the playing floor by means of an awning crank type mechanism. Height adjustment system shall incorporate an internal, spring-loaded height locking mechanism to automatically lock and hold unit at any desired goal height during play. Lock mechanism automatically releases when height setting changes are made with adjustment crank assembly. Adjustment crank assembly shall be provided with each pair of height adjustment units.

A height setting scale shall be located on the side of the unit to visually determine height settings from 8'-0" to 10'-0" in 3" increments.

Height adjustment frame shall be finished with one coat of flat black enamel. (If painting of special colors is required, specify final painting by painting contractor.)

LIFETIME WARRANTY (ADD TO SPECIFICATIONS AS REQUIRED)

Limited lifetime warranty on Porter backboards when used in conjunction with Porter Center-Strut® height adjustment unit installed on a Porter wall-mounted backstop.