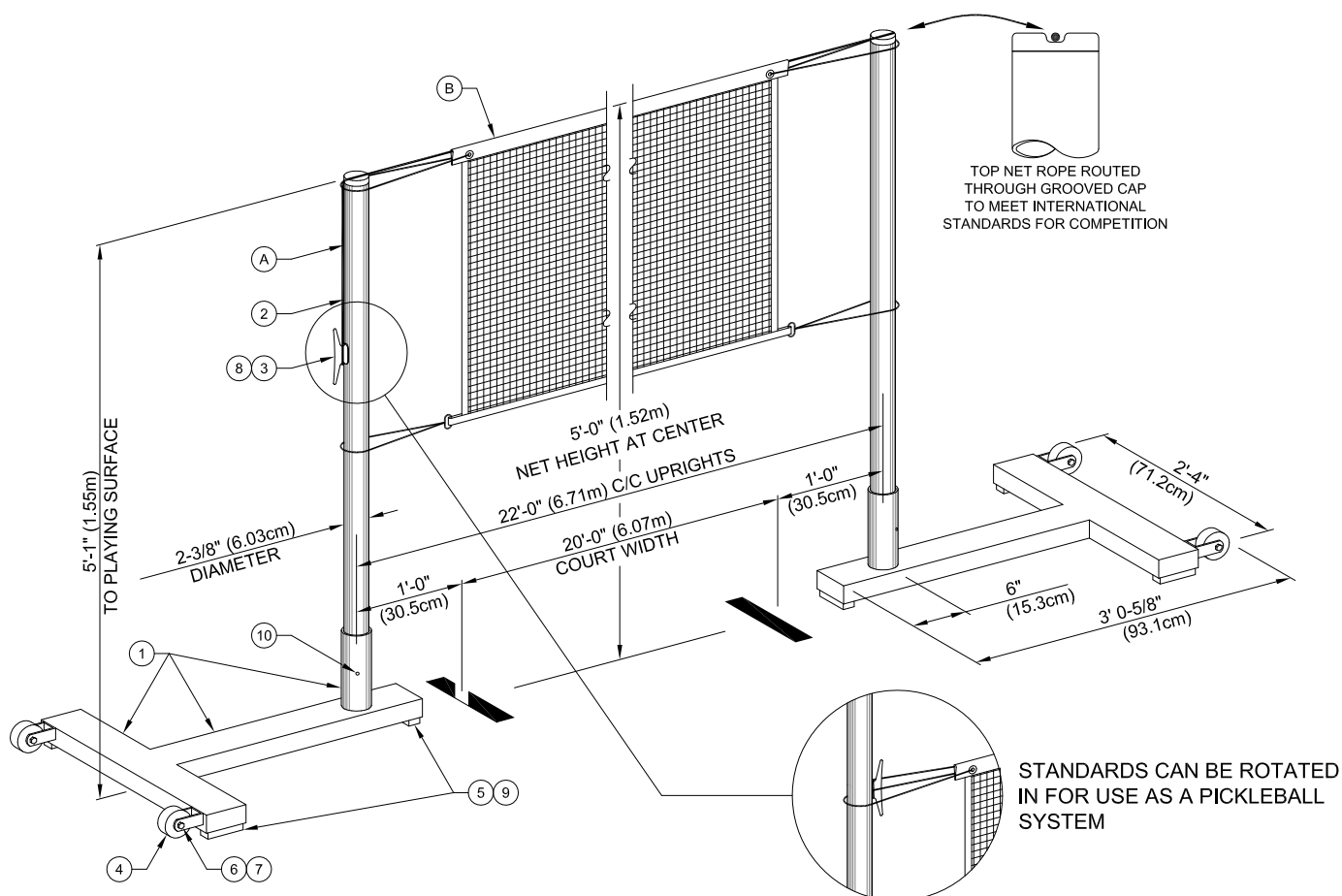


779000 - PORTABLE BADMINTON STANDARDS

779000 2-3/8" DIA. INTERNATIONAL COMPETITION PORTABLE BADMINTON STANDARDS (PAIR)



PARTS LIST			
No.	QTY.	DESCRIPTION	
1	2	BASE 00092 001	BASE
2	2	UPRT 00273 108	UPRIGHT ASSEMBLY
3	2	ROPE 00008 0G0	ROPE CLEAT
4	4	CSTR 00001 000	3" DIA. WHEEL
5	6	FEET 00002 000	RUBBER FOOT
6	4	HDWE 01208 0E0	3/8" x 2-1/2" Lg. HEX HEAD CAP SCREW (Grade 5)
7	4	HDWE 03005 0E0	3/8" LOCKING CAP NUT
8	4	HDWE 06009 0E0	1/4" x 1-1/2" Lg. MACHINE SCREW
9	12	HDWE 06016 000	1/4" x 3/4" Lg. CAP SCREW
10	4	HDWE 09015 000	5/16 x 3/8" Lg. SET SCREW

Ⓐ — 779000 2 3/8" DIA. INTERNATIONAL COMPETITION PORTABLE BADMINTON STANDARDS (PAIR)

Ⓑ — 2236110 BADMINTON NET 20' x 30' [6.10m x 76.2cm] (EACH)

See V-2236-11

Porter[®]

888-277-7778 PORTER@PORTERATHLETIC.COM
© COPYRIGHT 2015 PORTER ATHLETIC - ALL RIGHTS RESERVED

PROJECT NUMBER _____

PROJECT NAME _____

Porter

WWW.PORTERATHLETIC.COM/FACILITY

BADMINTON SPECIFICATION SHEET

V-779

12/16/2016

779000 - PORTABLE BADMINTON STANDARDS

779000 2-3/8" DIA. INTERNATIONAL COMPETITION
PORTABLE BADMINTON STANDARDS (PAIR)

SPECIFICATIONS

PORTER No. 779000 INTERNATIONAL COMPETITION
PORTABLE BADMINTON STANDARDS (ONE PAIR)

Standards designed to meet the International Badminton Federation specifications for competition badminton.

Heavy fabricated T-shaped steel bases (145 pounds – 65.8 kilograms) shall be furnished with non-marking, anti-slip type rubber feet to provide maximum stability for all levels of competition. Each base shall be equipped with two (2) 3" (7.6 cm) diameter casters for ease of tipping and rolling unit to and from storage areas. Base sections shall include a heavy-wall tubular steel sleeve with set screws to secure uprights. Bases finished in a durable, powder-coated finish.

Uprights are of 2-3/8" (6.03cm) heavy-wall steel tubes fitted with a special top cap with machined groove for rope in top hem of net to meet competition requirements. Outside of uprights shall be equipped with cast type rope cleats for securing rope from net and maintaining proper tension. Uprights finished in a durable, powder-coated finish.