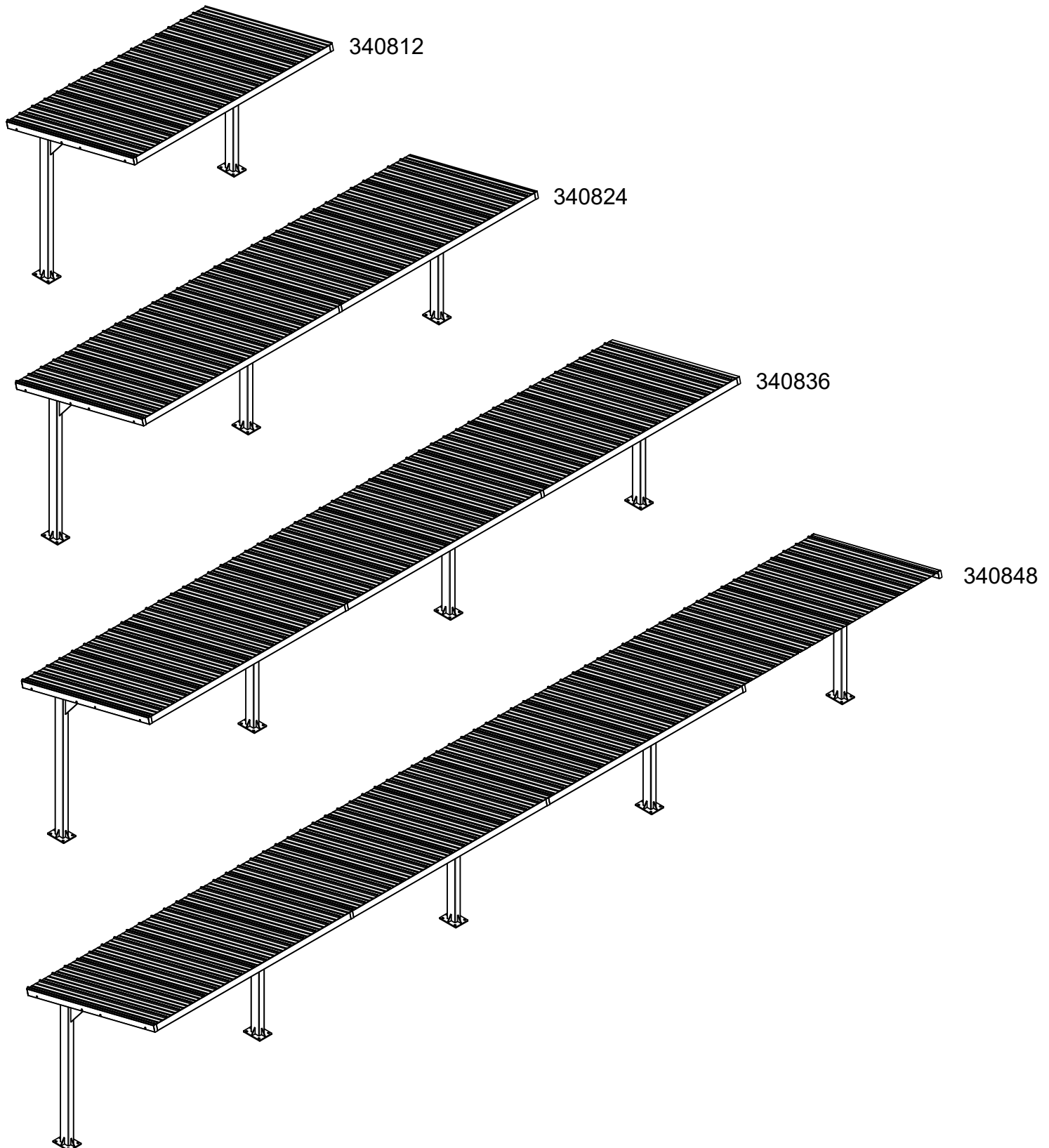




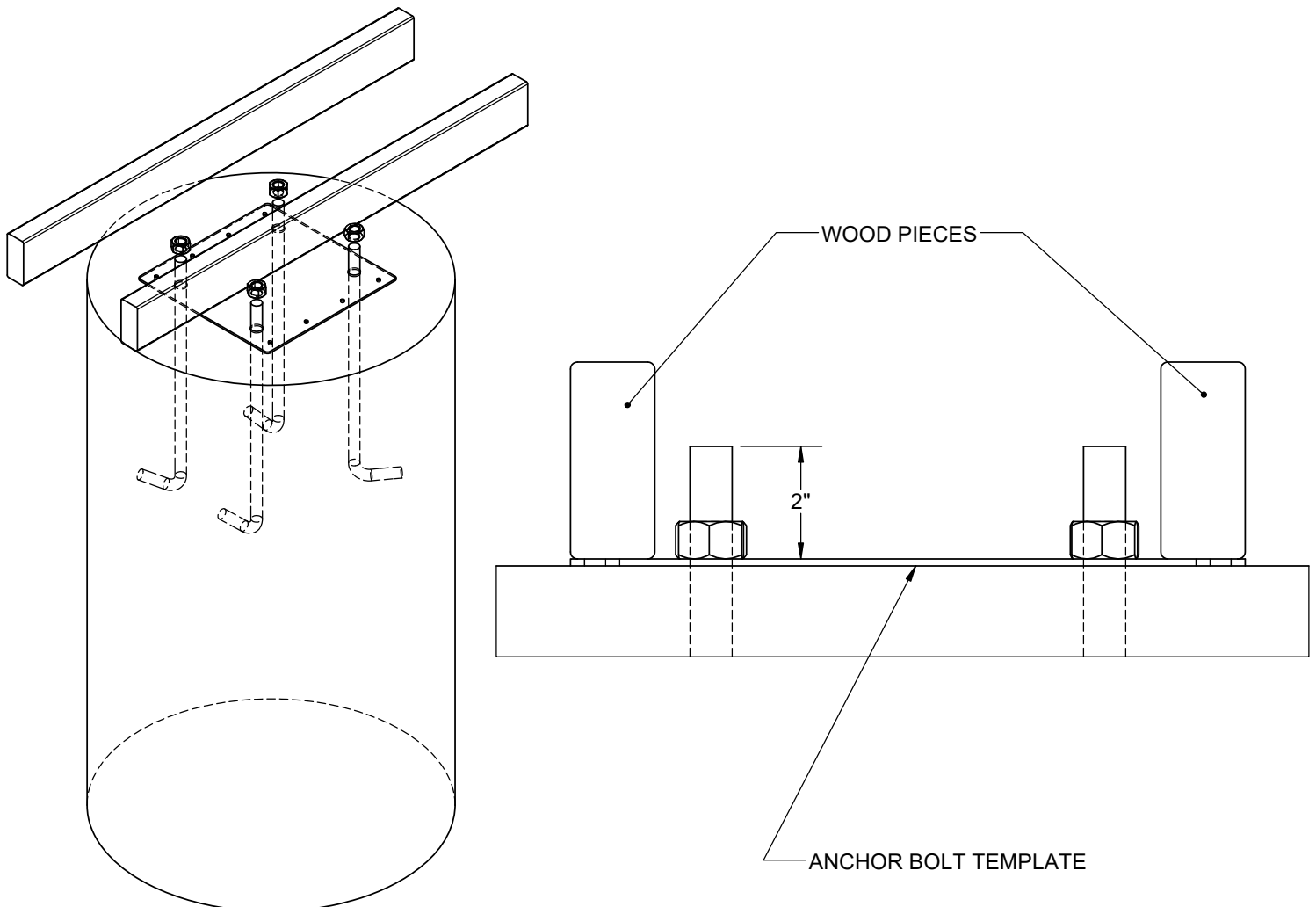
www.gillathletics.com  
800-637-3090

## CANTILEVER DUGOUT INSTRUCTIONS 3408XX



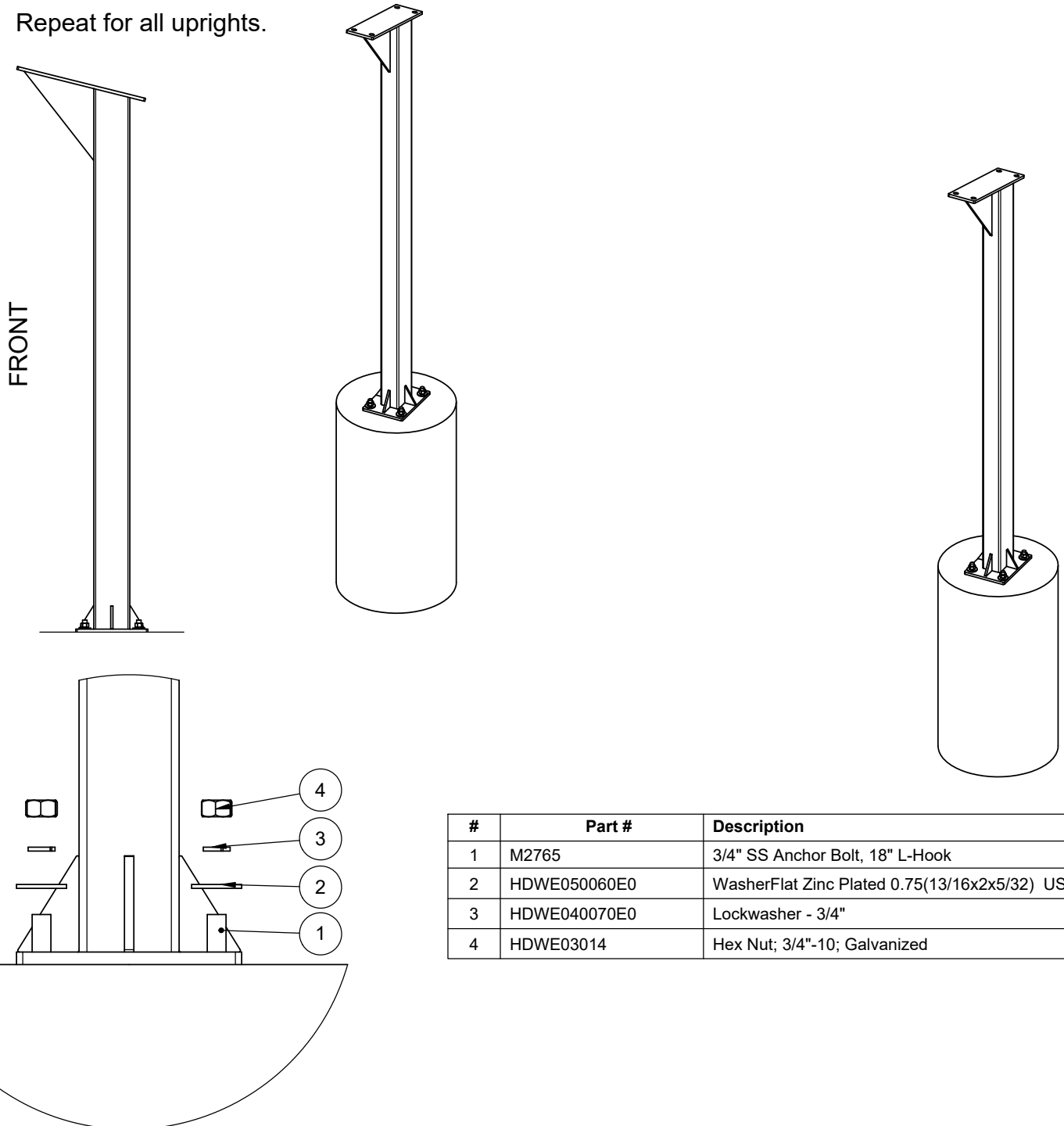
## **ANCHOR BOLT INSTALLATION**

1. Dig hole for recommended footing size based on your local soil conditions ( 2'-0"  $\phi$  X 4'-0" minimum).
2. Attach supplied anchor bolt template to 2 pieces of wood using wood screws (not supplied).
3. Insert anchor bolts into template and hold them in place with hex nuts provided. Top of anchor bolt should be 2" from the top of the template plate.
4. Center anchor bolt template in footing hole. Shim wood piecesto make sure they are level. Wood pieces must be perpendicular to front and back of the dugout.
5. Double check that all anchors are aligned and at the correct spacing from one another before pouring concrete. Use stakes to keep the templates in place during the concrete pour.
6. Fill footing with concrete until it reaches the bottom of the anchor bolt template.



## INSTALLATION INSTRUCTIONS

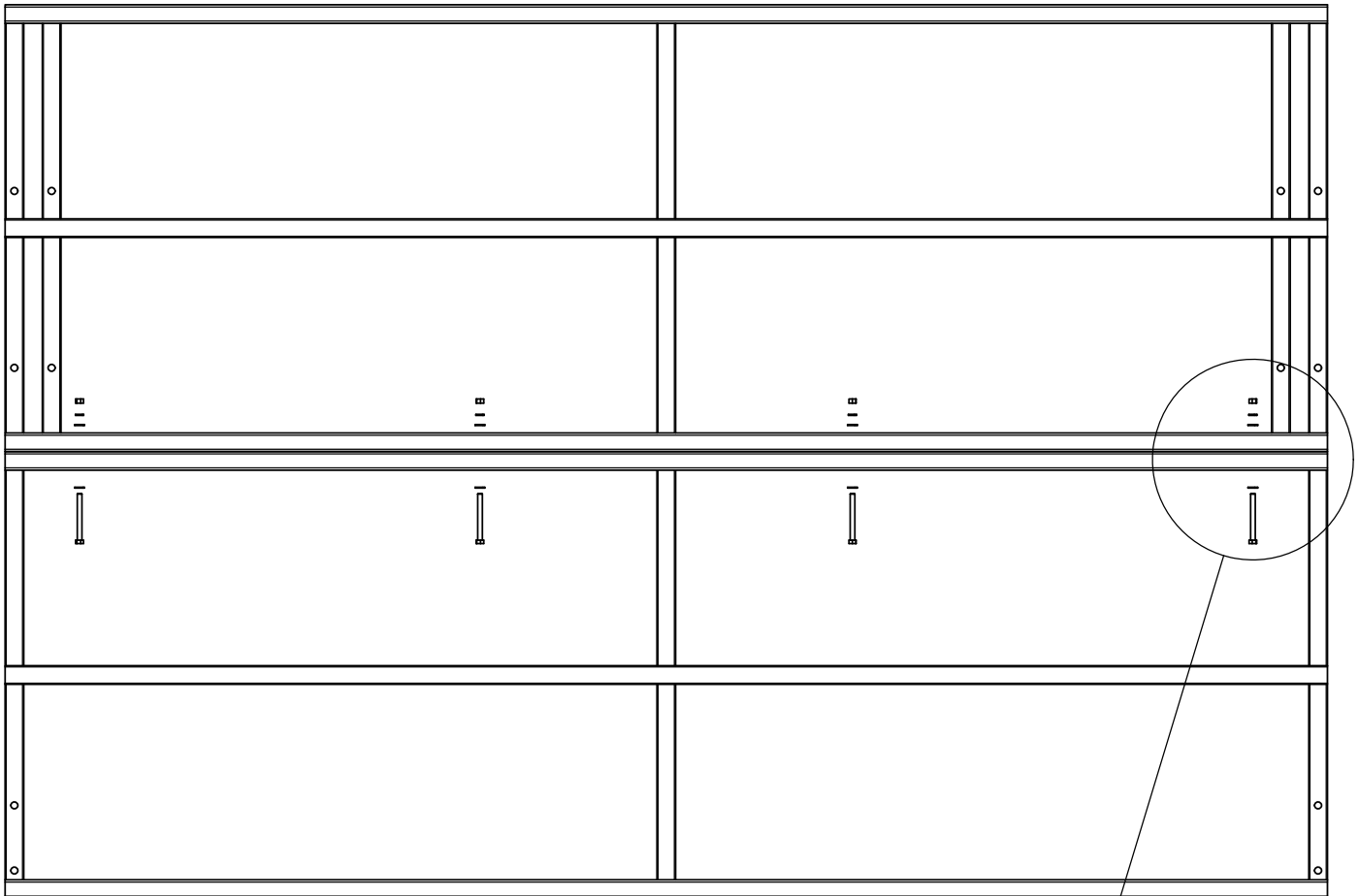
1. Lift upright onto anchor bolts once concrete is cured. (Note the orientation of uprights)
2. Secure uprights with supplied washer, lock washer, and hex nut.
3. Do not tighten down upright completely. Some play in upright will assist in attaching roof frame later.
4. Repeat for all uprights.



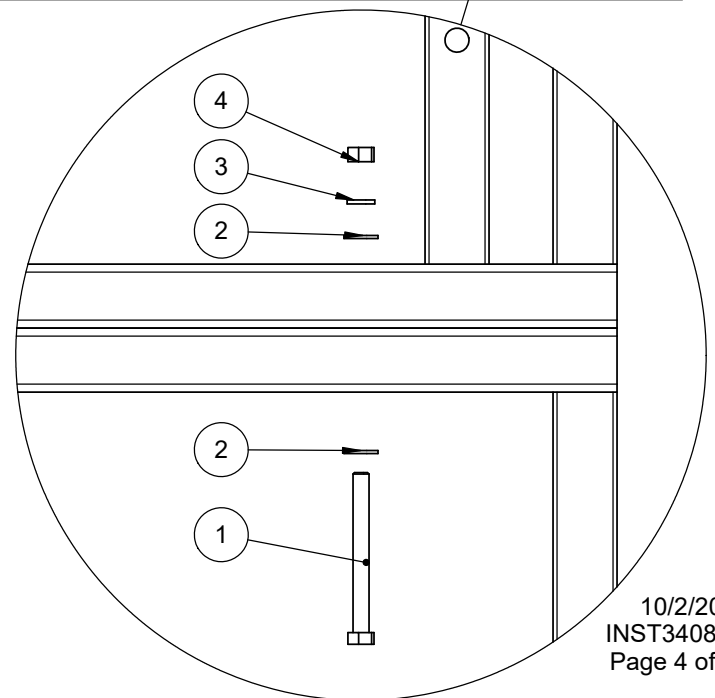
#	Part #	Description
1	M2765	3/4" SS Anchor Bolt, 18" L-Hook
2	HDWE050060E0	WasherFlat Zinc Plated 0.75(13/16x2x5/32) USS
3	HDWE040070E0	Lockwasher - 3/4"
4	HDWE03014	Hex Nut; 3/4"-10; Galvanized

## **INSTALLATION INSTRUCTIONS**

5. Lay out all roofing parts on ground and bolt together each of the panels.

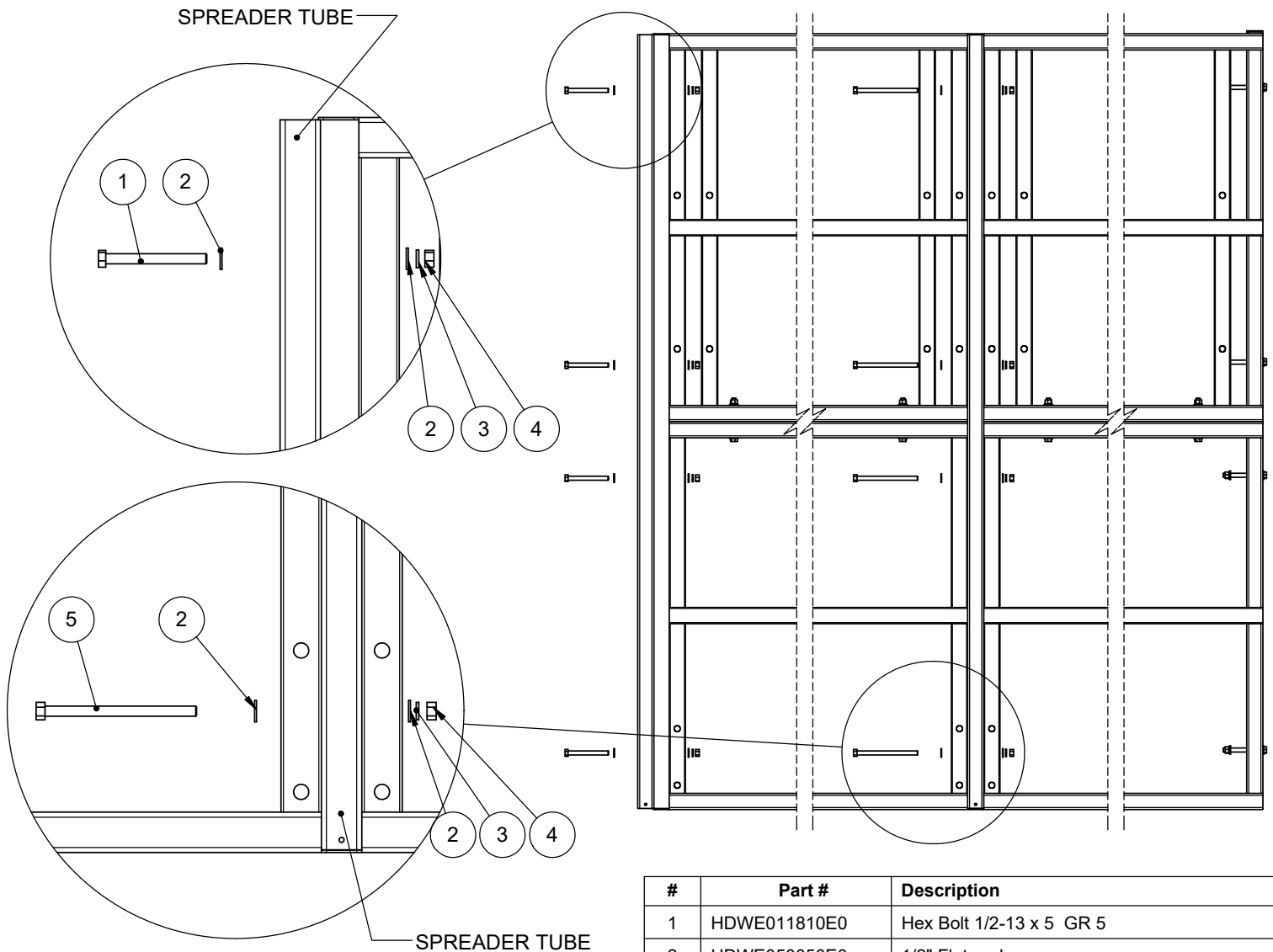


#	Part #	Description
1	HDWE011810E0	Hex Bolt 1/2-13 x 5 GR 5
2	HDWE050050E0	1/2" Flatwasher
3	HDWE040030E0	1/2" Lock Washer
4	HDWE030030E0	Hex Nut 1/2-13



## INSTALLATION INSTRUCTIONS

6. Position a spreader tube at each end of the roof frames bolted together in the previous step.
7. Bolt spreader tubes onto frames as shown below.
8. Raise roof frame and bolt to legs.
9. Tighten all bolts to secure dugout.



SPREADER TUBES ARE PLACED BETWEEN  
 ROOF FRAMES FOR 24', 36', AND 48' DUGOUTS

#	Part #	Description
1	HDWE011810E0	Hex Bolt 1/2-13 x 5 GR 5
2	HDWE050050E0	1/2" Flatwasher
3	HDWE040030E0	1/2" Lock Washer
4	HDWE030030E0	Hex Nut 1/2-13
5	HDWE012820E0	1/2"-13 X 7-1/2" HEX HEAD CAP SCREW



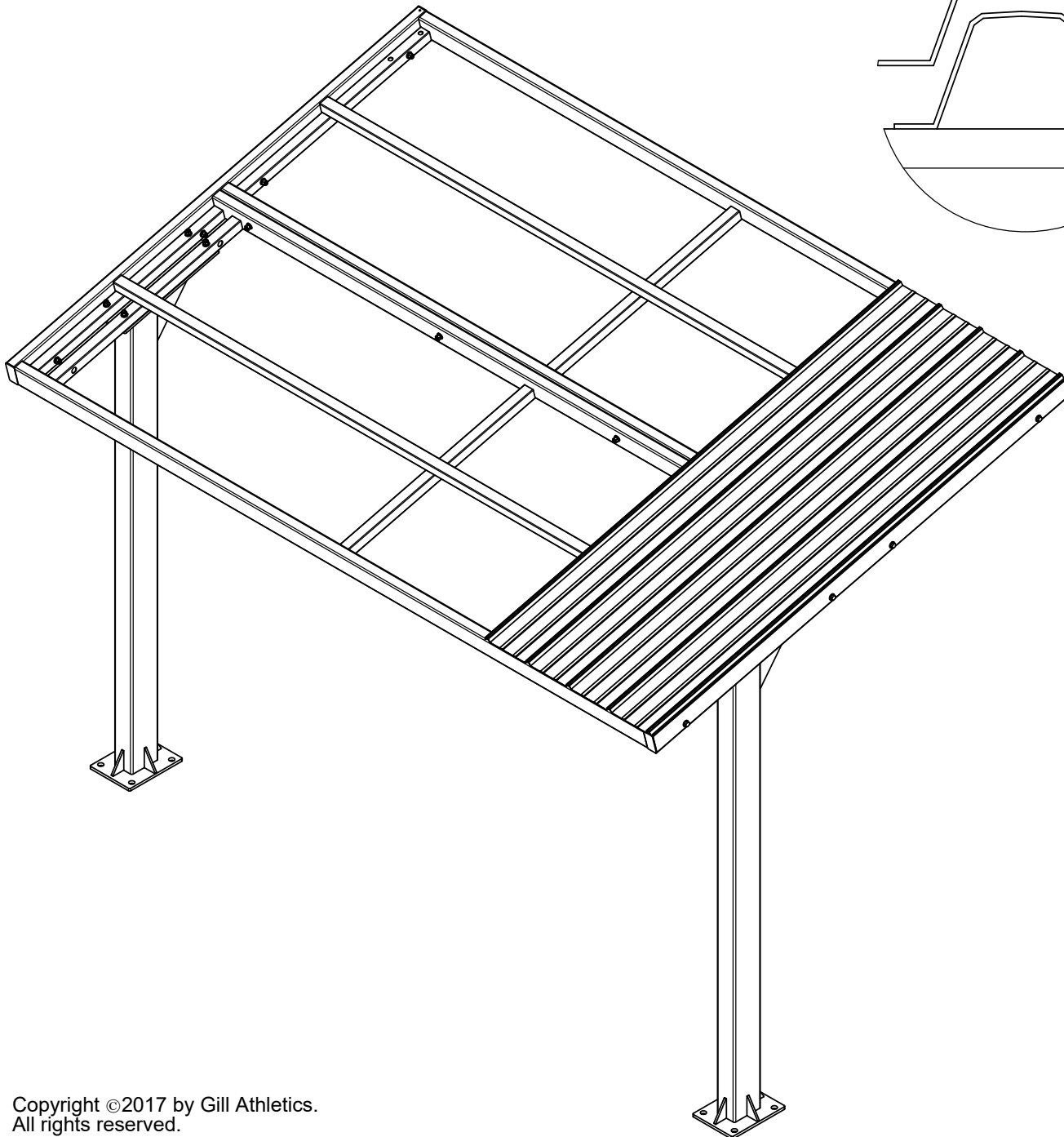
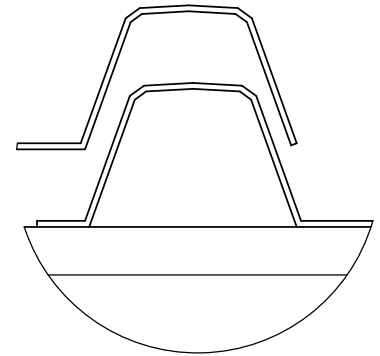
www.gillathletics.com  
800-637-3090

## CANTILEVER DUGOUT INSTRUCTIONS 3408XX

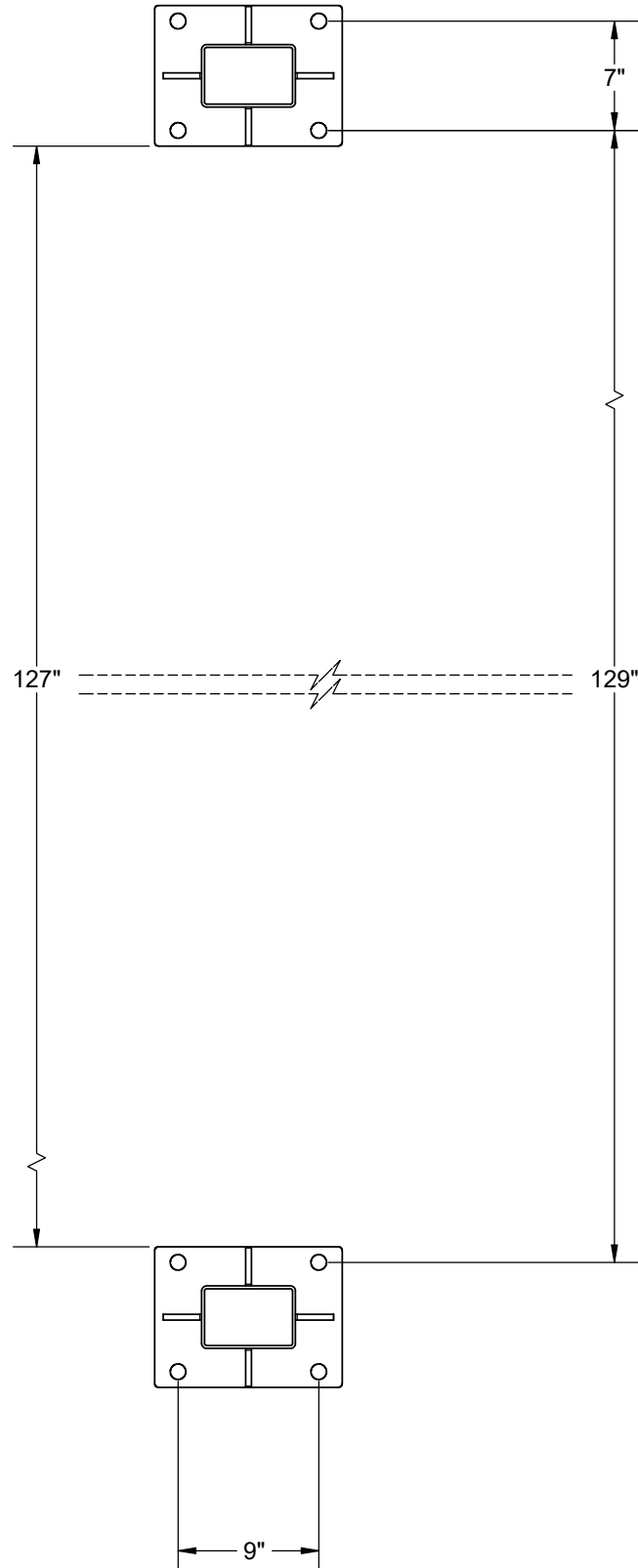
### INSTALLATION INSTRUCTIONS

10. Starting at one end of the dugout, attach the first roof sheet. The roof sheet should be centered between the front and back of the roof frame.
11. Secure first sheet with supplied self drilling screws.
12. Continue attaching sheets as you move across the roof frame. Each subsequent sheet should overlap the previous by one (1) rib\*\*.

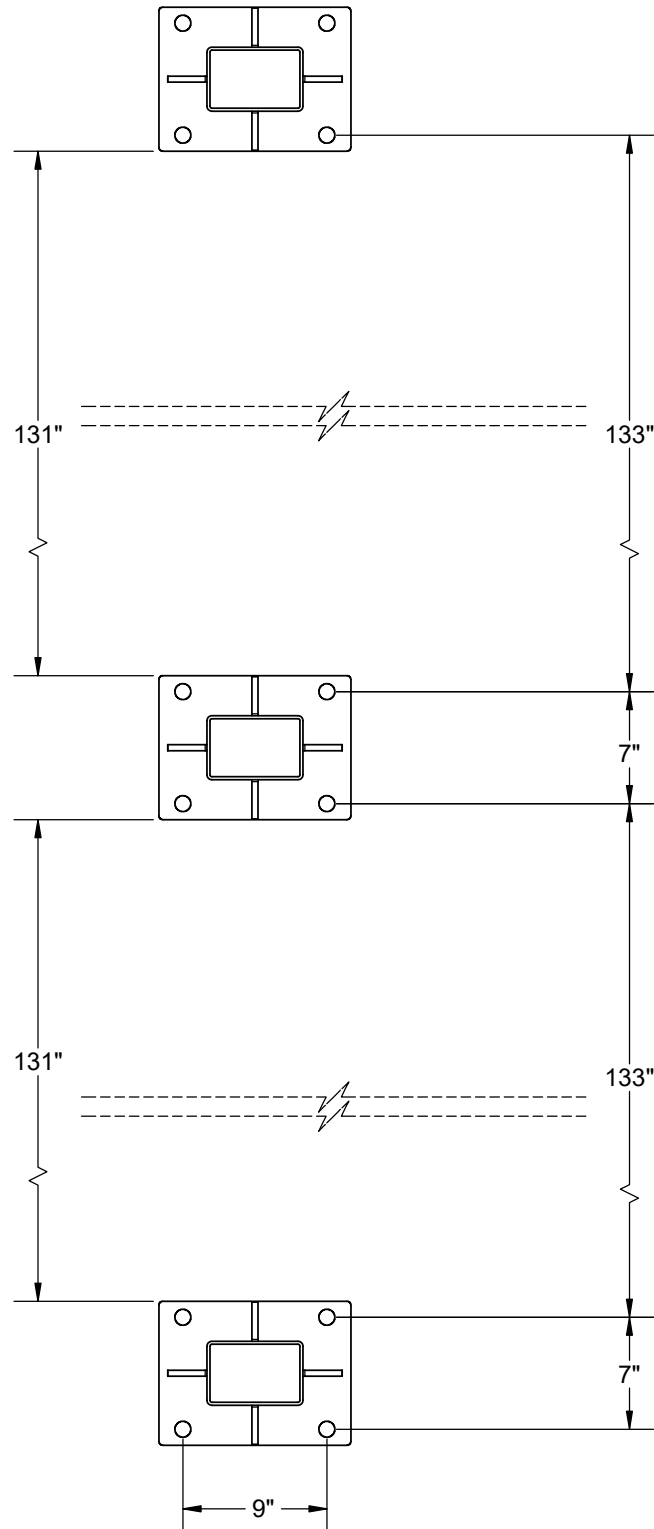
\*\*ROOF SHEET OVERLAP DETAIL



**340812 - 12' DUGOUT**

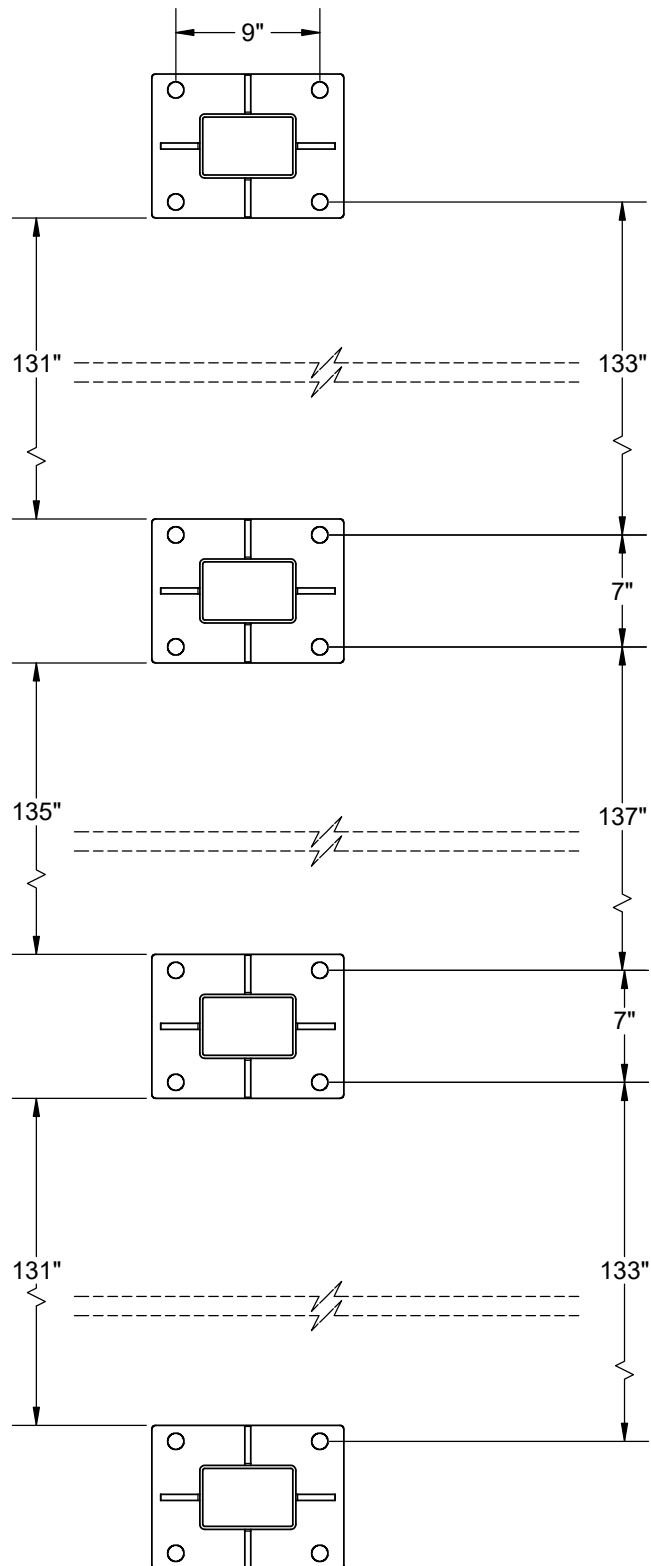


**340824 - 24' DUGOUT**





**340836 - 36' DUGOUT**



**340848 - 48' DUGOUT**

